

Contract Provisions and Plans

**PURCHASE & ASSEMBLY OF (QTY 3)
MARINE DIESEL ENGINE PACKAGES FOR
THE VEHICLE AND PASSENGER FERRY
M/V GUEMES**

Project #FE8-60

Bid Opening: Monday, October 28th, 2024

SKAGIT COUNTY PUBLIC WORKS



PURCHASE & ASSEMBLY OF (QTY 3) MARINE DIESEL ENGINE PACKAGES FOR THE VEHICLE & PASSENGER FERRY M/V GUEMES

Project #FE8-60

This Contract provides for the procurement and assembly of three new diesel engine packages for the vehicle and passenger ferry, M/V Guemes. All work shall be performed in accordance with the attached Specifications, Contract Plans, these Contract Provisions, and the 2025 Standard Specifications.

Schedule: The complete engine packages shall be delivered to a local Puget Sound shipyard yet to be determined between March 15 and April 15, 2025.

Measurement & Payment: Each item will be per the bid proposal. Payment shall be issued upon completion and inspection of milestones per the bid proposal.



**PURCHASE & ASSEMBLY OF (QTY 3) MARINE DIESEL
ENGINE PACKAGES FOR THE VEHICLE & PASSENGER
FERRY M/V GUEMES**

Project #FE8-60

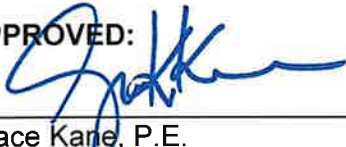
Bid Opening: October 28, 2024

**SKAGIT COUNTY
DEPARTMENT OF PUBLIC WORKS
MOUNT VERNON, WASHINGTON 98273-5625**

NOTICE TO ALL PLAN HOLDERS

Copies of the Plans and specifications are available at Skagit County Public Works, 1800 Continental Place, Mount Vernon, Washington 98273-5625. Telephone: (360) 416-1400. You may receive the bid information electronically; copies of the plans and specifications are available at: <http://www.skagitcounty.net/rfp>.

APPROVED:

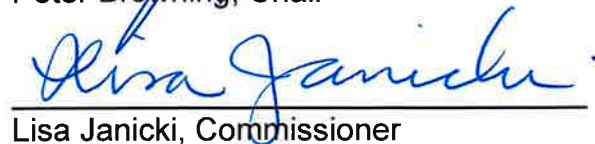


Grace Kane, P.E.
Public Works Director/County Engineer

SPECIFICATIONS APPROVED:

BOARD OF COUNTY COMMISSIONERS
SKAGIT COUNTY, WASHINGTON



Peter Browning, Chair

Lisa Janicki, Commissioner

ABSENT

Ron Wesen, Commissioner

PURCHASE & ASSEMBLY OF (QTY 3) MARINE DIESEL ENGINE PACKAGES FOR THE VEHICLE & PASSENGER FERRY M/V GUEMES

Project #FE8-60

CERTIFICATION

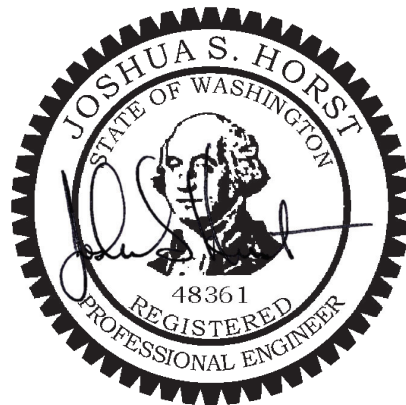
I hereby certify that these contract documents were reviewed/prepared by me or under my direct supervision, and that I am a duly registered Professional Engineer under the laws of the State of Washington.

Engineer of Record



09/25/2024

Engineer of Record



9/26/2024

NOTICE OF CALL FOR BIDS

NOTICE IS HEREBY GIVEN BY SKAGIT COUNTY that sealed bids will be received and publicly opened in the Commissioners Hearing Room, 1800 Continental Place, Mount Vernon, WA 98273, on **Monday, October 28, 2024; at the hour of 12:00 p.m.**, or as soon thereafter as possible. Attendance at meetings will be in-person. You may also attend meetings remotely through your telephone or from your computer, tablet or smartphone with this link:

<https://us06web.zoom.us/j/87180001980?pwd=eEVGUGkxZ3NkQkhYSnhBMEo2RTQrdz09> or calling: 1 (253) 215-8782, Meeting ID: 871 8000 1980.

PROJECT TITLE: PURCHASE & ASSEMBLY OF (QTY 3) MARINE DIESEL ENGINE PACKAGES FOR THE VEHICLE & PASSENGER FERRY M/V GUEMES PROJECT #FE8-60

SCOPE OF WORK: This project is for the procurement and assembly of three new diesel engine packages for the vehicle and passenger ferry, M/V Guemes.

BID DOCUMENTS

Information, copies of bid documents, drawings and other reference material and addenda for this project will be available on-line beginning **October 10, 2024**, at <http://www.skagitcounty.net/rfp> or obtained at Skagit County Public Works Department, 1800 Continental Place, Mount Vernon, WA; (360) 416-1400. Contractors who download plans and specifications are advised to e-mail brendao@co.skagit.wa.us to be added to plan holders list to receive any addenda that may be issued.

PRE-BID MEETING

A non-mandatory pre-bid meeting will be held Monday, October 14, 2024 promptly at 11:45 a.m., at the Anacortes ferry terminal located at 500 I Avenue, Anacortes, WA 98221. While the meeting is non-mandatory, attendance is highly recommended for all Bidders. **All questions must be submitted in writing no later than Wednesday, October 16, 2024 by 4:30 p.m.** to Rachel Rowe, Ferry Operations Division Manager at: 1800 Continental Place, Mount Vernon, WA, 98273, or at rowe@co.skagit.wa.us. All addenda will be issued by **Friday, October 18, 2024, no later than 4:30 p.m.** **Questions submitted after 4:30 p.m. on October 16, 2024, will not be considered, no answers will be provided, and no addenda will be issued.**

All bid envelopes must be clearly marked on the outside, **“Sealed Bid, 2024 Purchase and Assembly of (QTY 3) Marine Diesel Engine Packages for the Vehicle and Passenger Ferry M/V Guemes”**. Sealed bids shall be received by one of the following delivery methods before **Monday, October 28, 2024; at the hour of 12:00 p.m.** Proposals are to be submitted on the forms provided in the Bid Proposal Packet. Incomplete proposals and proposals received after the time fixed for the opening cannot be considered. Oral, telephonic, telegraphic, electronic or faxed proposals will not be accepted. All bidding shall be based upon compliance with the Contract Provisions and Plans.

1. **Hand-delivered:** Bids delivered in person shall be received only at the office of the SKAGIT COUNTY COMMISSIONERS, Reception Desk, 1800 Continental Place, Suite 100, Mount Vernon, WA 98273.
2. **Via mail:** Bids shall be mailed to the SKAGIT COUNTY COMMISSIONERS, 1800 Continental Place, Suite 100, Mount Vernon, WA 98273.

PUBLIC WORKS PROJECT

Maintenance performed by a Contractor on a County-owned ferry is considered a public works project as defined in RCW 39.04, and therefore, Washington State Prevailing Wage Rates apply to this Contract and Bidders are advised to consider this charge when tabulating bids.

INSURANCE

Commercial General Liability Insurance, Business Automobile Liability Insurance, Industrial Insurance (Workers' Compensation) and USL&H Insurance (a/k/a "Long shore Harbor Worker's Compensation Act/Jones Act) are a requirement of this project.

BID GUARANTY

No bid will be considered unless accompanied by a surety company bid bond, or a certified or cashier's check payable to the order of Skagit County for a sum not less than five percent (5%) of the total amount of the bid. A Contract Bond covering performance and payment will be required with the Contract.

Skagit County reserves the right to reject any or all bids, and the right to waive any informalities or irregularities in any bid or in any bidding and to further award the Project to the lowest, responsive, responsible bidder whose bid complies with all of the prescribed formalities, as it best serves the interest of Skagit County. After the date and hour set for the opening of bids, no bidder may withdraw its bid unless the award of the Contract is delayed for a period exceeding sixty (60) calendar days following bid opening. All Bidders agree to be bound by their bids until the expiration of this stated time period.

The Skagit County, in accordance with the provisions of Title VI of the Civil Rights Act of 1964 (78 Stat. 252, 42 U.S.C. §§ 2000d to 2000d-4) and the Regulations, hereby notifies all bidders that it will affirmatively ensure that any contract entered into pursuant to this advertisement, disadvantaged business enterprises will be afforded full and fair opportunity to submit bids in response to this invitation and will not be discriminated against on the grounds of race, color, or national origin in consideration for an award.

For questions regarding Skagit County's Title VI Program, you may contact the Public Works Department's Title VI Coordinator, Michael See, at (360) 416-1400.

The Board of Skagit County Commissioners reserves the right to reject any or all bids.

NOTICE GIVEN BY ORDER OF THE BOARD OF SKAGIT COUNTY COMMISSIONERS this 7th day of October 2024.


Clerk of the Board

Published: Skagit Valley Herald –October 10th & 17th, 2024
Daily Journal of Commerce - October 10th & 17th, 2024

GENERAL INFORMATION

PROJECT TITLE: PURCHASE AND ASSEMBLY OF (QTY 3) MARINE DIESEL ENGINE PACKAGES FOR THE VEHICLE AND PASSENGER FERRY MV GUEMES, PROJECT #FE8-60

BID DUE DATE: Monday, October 28, 2024, no later than 12:00 p.m.

Sealed bids will be received by the Board of Skagit County Commissioners. Bids must be received by Monday, October 28, 2024, no later than 12:00 p.m. Hand-deliver or mail to Skagit County Commissioners at 1800 Continental Place, Suite 100, Mount Vernon, WA 98273.

Bids remain confidential, and no information about bids is released until the public information of the bids is otherwise available.

REFERENCES:

1. 24014-180-101 Engine Foundation & Thruster Connection Drawing

SPECIFICATIONS:

1. FABRICATE ENGINE SKIDS

The M/V Guemes currently has two (2) foundations onboard the vessel scheduled to be removed and replaced by the shipyard during the vessel's dry dock period (planned for spring 2025).

With the provision of three (3) new engines under this contract, the Contractor is required to fabricate new skids and install these skids under the contractor-provided equipment as a part of the final assembly package.

Each of the three (3) new engines shall be provided with a primed and coated steel skid-base and vibration isolators (see equipment options). Reference 24014-180-101 Engine Foundation & Thruster Connection Drawing for skid details. This drawing is to provide commonality for bidders; therefore, it is for bidding purposes only. Final equipment selection may require updates to Reference 24014-180-101. Upon final equipment selection, Skagit County will provide the Contractor with an updated final drawing for fabrication.

2. PRIME AND COAT ENGINE SKID

The manufactured engine skids (see spec. section 1) are to be primed and painted with coatings suitable for marine environments.

3. INSTALL REBUILT ZF REDUCTION GEAR

Upon commencement of work, Skagit County will be responsible for removing three (3) Skagit-County owned ZF-550 reduction gears from the existing engines and shipping them to ZF Marine in Mukilteo, WA to be re-configured for fit up to the new, contractor-provided marine diesel engines.

Once re-built, the reduction gears will arrive at the Contractor's workshop where they shall be installed and aligned to the new engines. The transportation, arrangements, and overhaul will be at the Owner's expense. As part of this work, the Contractor shall pick (lift) the reduction gears onto and from a flatbed transport truck.

4. MOUNT & ALIGN ENGINE/GEAR ASSEMBLY

The M/V Guemes currently has two (2) Cummins KTA19-M3 marine diesel engines that are scheduled for removal. The proposed engines to replace these in kind shall be new, channel cooled, with a rating of approximately 600 hp @ 1800 RPM and shall meet the following minimum requirements:

The Contractor shall provide three (3) marine diesel engines.

The engines shall be mounted and aligned using vibration isolation mounts, TT3 or equivalent. All mounts shall be sized to achieve proper engine alignment and shall be installed in accordance with manufacturer recommendations. Vibration Isolation selection shall be approved by the Ferry Operations Division Manager prior to procurement by the Contractor.

The Contractor shall ensure proper containment, handling, storage and/or disposal of all hazardous liquids when assembling the new engines.

The engines must be warranted to be free from defects in parts supplied by the vendor and free from defects in workmanship, under conditions of normal use and maintenance, for a period of at least ONE (1) YEAR FROM THE DATE THE ENGINES ARE PLACED INTO SERVICE BY THE COUNTY – approximately 1-4 months after equipment delivery.

It is recommended that all interested bidders attend the pre-bid meeting to fully understand the scope of the engine replacement, skid fabrication, and engine/gear assembly. A ship check will take place as a part of the pre-bid meeting, and bidders will have access to the engines.

The new engines shall be delivered at a date and time as authorized by the Ferry Operations Division Manager. Equipment shall be delivered to the vessel's selected shipyard during its upcoming drydock period in 2025. Shipping expenditures will be reimbursed by Skagit County at actual cost.

5. EQUIPMENT OPTIONS

In addition to the standard equipment, the following optional equipment shall be provided:

- Air Inlet System
 - Aftercooler – Separate Circuit, Corrosion Resistant (SCAC)
 - Air Cleaner/Fumes Disposal, Closed System
 - Turbochargers, Jacket Water Cooled
 - Turbocharger Inlet 152mm (6IN) OD Straight Connection
- Control System
 - Programmable Low Idle
 - Electronic Diagnostics and Fault Logging
 - Engine and Transmission Monitoring (Speed, Temperature, Pressure)
 - Electronic Fuel/Air Ratio Control
 - 70 Pin Connector
 - Throttle Input Signals: 0-5V, 4-20MA, or PWM

- Cooling System
 - Thermostat and Housing
 - Jacket Water Pump, Gear Driven
 - Auxiliary Water Pump, Gear Driven
 - SCAC Pump
 - Expansion Tanks for JW and SCAC Circuits
- Exhaust System
 - Manifold & Turbochargers, Watercooled
 - 152mm (6in) Round Flanged Outlet
 - Required Expansion Joints
- Flywheels & Flywheel Housings
 - Flywheel, SAE No. 0 138 Teeth
 - Flywheel Housing, SAE NO.0
- Fuel System
 - Front Service Simplex Fuel System
 - Fuel Transfer Pump, Gear Driven
 - Manual Fuel Priming Pump
 - Hybrid Fuel Line Design
- Lube System
 - Front Service Simplex Oil System
 - Oil Cooler
 - Oil Filler, Front
 - Dipstick, Front
 - Oil Pump, Gear Driven
 - Center Deep Sump Oil Pan (500 Hour)
- Mounting System
 - Set of Vibration Isolation Mounts (TT3 or Equivalent)
 - Set of Required Engine/Gear Mounting Brackets to fit steel skid provided as part of this procurement
- General
 - Vibration Damper
 - Marine Grade Paint
 - Lifting Eyes
 - Literature
 - Common Electrical Bonding Point
- Complex Torsional Vibration Analysis
- Rotating Mass Analysis
- Miscellaneous
 - QTY 3 Transmission Oil Coolers, Full Flow), Shipped Loose
 - QTY 3 24 Volt Electric Starting Motors
 - QTY 3 24 Volt 105 AMP Charging Alternators
 - QTY 3 Jacket Water Heater 120VAC 1500 WATT
 - QTY 3 8" Dry Exhaust Elbows and Weld Flanges
 - QTY 3 Live SAE 'B' Hydraulic Pump Drives
 - QTY 2 8" Touch Screen Displays for Single Station Pilot House Monitoring. Includes Start/Stop Panels, Junction Boxes, and All Associated Wiring for Plug and Play Installation
 - QTY 1 SET (Electronic) Parts Book, Operation and Maintenance Manual, and Commercial Service Manual
 - QTY 2 Local MECP Panels with Start/Stop

- QTY 3 EPA EIAPP Emissions Document
- QTY 3 Front Power Takeoff Adapters SAE #2 Housing
- QTY 3 Sending Units for Exhaust Temperature

Proposals submitted shall include a full set of engine specifications and dimensions. All equipment quotations shall be included as part of the Contractor's bid proposal and itemized.

The installation assistance to be provided by the Contractor shall consist of installation, start-up, and sea trials and should be included in the bid. The installation schedule will be agreed upon by the Ferry Operations Division Manager and the Contractor at least two weeks prior to installation during the vessel's shipyard period. The technician will perform installation assistance during the vessel's upcoming drydock period in 2025 at the County's chosen shipyard. Work will be performed onboard the M/V Guemes; all tools necessary to complete this work will be the responsibility of the Contractor.

The Contractor shall provide maintenance of the engines for a period of one year. Bidders shall attach labor rates to their bid proposal to include straight time work, overtime work, Sunday and holiday work, travel rates and any associated minimum charges. If the lowest bidder fails to include their labor rates schedule with their bid proposal, this information shall be provided up to 24 hours after bid opening to the Ferry Operations Division Manager.

The installation assistance and maintenance portion of this project is considered a public works project; therefore, prevailing wages shall apply. In addition, the following shall apply to the labor portion of the contract:

Public Works Project:

The State of Washington prevailing wage rates applicable for this public works project, which is located in Skagit County, may be found at the following website address of the Department of Labor and Industries: <https://fortress.wa.gov/lni/wagelookup/prvWagelookup.aspx>, or email cprice@co.skagit.wa.us to request a copy. Based on the bid submittal deadline for this project, the applicable effective date for the prevailing wages for this project is October 28, 2024.

If awarded the project, the Contractor and each Subcontractor shall complete or have on file with the county a current "Statement of Intent to Pay Prevailing Wages" before payment will be made for work performed. An "Affidavit of Wages Paid" shall be required at the end of the project. These forms are available from the Washington State Department of Labor and Industries and can be filed electronically at <http://www.lni.wa.gov/TradesLicensing/PrevWage>.

Maintenance of the engines shall be provided for a period of one (1) year from the date of mutual execution of the contract.

Insurance:

Contractor shall comply with the following conditions and procure and keep in force during the term of this agreement, at Contractor's own cost and expense, the following policies of insurance with companies authorized to do business in the State of Washington, which are rated at least "A" or better and with a numerical rating of no less than seven (7), by A.M. Best Company and which are acceptable to the County.

1. Commercial General Liability Insurance on an occurrence basis in an amount not less than \$1,000,000 per occurrence and at least \$2,000,000 in the annual aggregate, including but not

limited to: premises/operations (including off-site operations), blanket contractual liability and broad form property damage.

2. Business Automobile Liability Insurance in an amount not less than \$1,000,000 per occurrence, extending to any automobile.
3. Workers' Compensation Insurance as required by Washington law and Employer's Liability Insurance (Stop Gap) with limits not less than \$1,000,000 per occurrence. If the County authorizes sublet work, the Contractor shall require each Subcontractor to provide Workers' Compensation Insurance for its employees, unless the Contractor covers such employees.
4. USL&H Insurance in an amount not less than \$1,000,000 per occurrence. (USL&H is a federal act sometimes referred to as "Longshore Harbor Worker's Compensation Act" or Jones Act).

The above liability policies shall contain a provision that the policy shall not be canceled or materially changed without 30 days prior written notice to the County. No cancellation provision in any insurance policy shall be construed in derogation of the continuous duty of the Contractor to furnish the required insurance during the term of this agreement.

Prior to the Contractor performing any Work, Contractor shall provide the County with a Certificate of Insurance acceptable to the County Risk Department evidencing the above-required insurance and naming Skagit County, its officers, employees and agents as additional insureds on the Commercial General Liability Insurance policy and the Business Automobile Liability Insurance policy with respect to the operations performed and services provided under this agreement and that such insurance shall apply as primary insurance on behalf of such additional insureds. Skagit County shall be named as an Additional Insured by endorsement. Receipt by the County of any certificate showing less coverage than required is not a waiver of the Contractor's obligations to fulfill the requirement

INTERPRETATION OF BID AND PURCHASE DOCUMENTS:

A pre-bid meeting will be held Wednesday, October 16, 2024, at 11:45 a.m. at the Anacortes Ferry Terminal, at 500 I Avenue, Anacortes, WA 98221. All bidders are encouraged to attend. All questions and requests for interpretation shall be in writing and submitted no later than 4:30 p.m., Thursday, October 17, 2024, to: Rachel Rowe, Ferry Operations Division Manager, by e-mail to rrowe@co.skagit.wa.us with the subject line reading, "PURCHASE AND ASSEMBLY OF (QTY 3) MARINE DIESEL ENGINE PACKAGES FOR THE VEHICLE AND PASSENGER FERRY MV GUEMES, PROJECT #FE8-60". All addenda will be posted on-line for this Project by 4:30 p.m. Friday, October 18, 2024. If further addenda are required to be issued, the bid opening may be postponed. All addenda shall become part of the bid package.

ADDENDA:

If Skagit County issues addenda to these instructions, bidders must acknowledge receipt of all addenda on the bid proposal. It is the bidder's responsibility to ensure that they have received all addenda, although Skagit County will make reasonable effort to provide addenda to all plan holders. Failure to sign the acknowledgement of the addendum may result in rejection of the bid.

EXAMINATION OF BID AND CONTRACT DOCUMENTS, SITE AND SITE CONDITIONS:

Bid submission constitutes acknowledgement upon which Skagit County may rely, that the bidder thoroughly examined and is familiar with the Contract Provisions and Specifications documents, familiar with all work sites, reviewed and inspected all applicable laws, statutes, regulations, ordinances and resolutions dealing with or related to the work and services to be provided, and work site(s), statutes, regulations, ordinances, or resolutions shall in no way

relieve the bidder from any obligations with respect to the bidder's offer or to the contract. No claim for additional compensation will be allowed which is based upon a lack of knowledge of any contract or resolutions. A signed contract furnished to the successful Contractor results in a binding contract without further action by either party.

NON-RESPONSIVE BID:

It is the intent of Skagit County to award a contract to the lowest responsive and responsible bidder. Any bid that does not comply with these instructions, is not signed, supplements or deviates from the specifications herein, or is incomplete, may be declared non-responsive by Skagit County and not further considered.

BIDDER RESPONSIBILITY CRITERIA:

Before award, the bidder must meet the following bidder responsibility criteria to be considered a responsible bidder. The bidder may be required by Skagit County to submit documentation demonstrating compliance with the criteria. The bidder must:

1. **At time of bid submittal**, the bidder must be registered/licensed contractor in compliance with Chapter 18.27 RCW and must provide this number with bid. If applicable, bidder may also be required to submit with bid: a) an electrical contractor license, if required by Chapter 19.28 RCW; and/or b) an elevator contractor license, if required by Chapter 70.87 RCW.
2. **At time of bid submittal**, the bidder must have completed the mandatory Prevailing Wage Training offered by the Department of Labor and Industries (L&I) or meet the L&I exemption requirements.
3. The bidder must have a current Washington State Unified Business Identifier (UBI) number and provide the number to Skagit County **at time of bid submittal**. This will be verified with the Washington State Department of Revenue.
4. The bidder must provide Washington State Industrial Insurance Coverage (a/k/a workers' compensation) in accordance with Washington State Department of Labor & Industries, **within 24 hours of the bid submittal deadline**, if applicable.
5. The bidder must provide their Employment Security Department number to Skagit County **at time of bid submittal**, as required in Title 50 RCW, if applicable. Bidder must provide document reflecting the appropriate number from the Employment Security Department to Skagit County **within 24 hours of the bid submittal deadline**, if applicable.
6. The bidder must have a Washington State Excise Tax Registration Number as required in Title 82 RCW, if applicable, **at time of bid submittal**. This will be verified with the Washington State Department of Revenue.
7. The bidder must not be currently disqualified from bidding on any public works contract under RCW 39.06.010 or 39.12.065(3). This will be verified with the Washington State Department of Labor & Industries.
8. **FEDERAL DEBARMENT:** The Bidder shall not currently be debarred or suspended by the Federal government. The Bidder shall not be listed as a current debarred or suspended bidder on the U.S. General Services Administration's "System for Award Management System" website, and will be verified through this website: <https://www.sam.gov/SAM/>

EXECUTION OF CONTRACT:

Within ten (10) calendar days after the award date, the successful bidder shall return the signed contract, all required insurance certifications, and any other required documentation as specified in this document. Skagit County may grant up to a maximum of ten (10) additional calendar days after the award date for return of the documents, provided that Skagit County deems the circumstances warrant it.

FAILURE TO EXECUTE CONTRACT:

Upon failure to return the insurance certifications and bond with the signed Contract as required, Skagit County may then award the contract to the second lowest responsible bidder or reject all remaining bids.

NON-COLLUSION:

Submittal and signature of the non-collusion certificate confirms that the bid is genuine and not a sham or collusive, and not made in the interest of any person not named, and that the Contractor has not induced or solicited others to submit a sham offer, or to refrain from proposing.

PROTESTS:

Protests will be in accordance with all RCW's as applicable.

APPENDIX A

Wage Rates

Washington State Prevailing Wage Rates

State of Washington
 Department of Labor & Industries
 Prevailing Wage Section - Telephone 360-902-5335
 PO Box 44540, Olympia, WA 98504-4540

Washington State Prevailing Wage

The PREVAILING WAGES listed here include both the hourly wage rate and the hourly rate of fringe benefits. On public works projects, worker's wage and benefit rates must add to not less than this total. A brief description of overtime calculation requirements are provided on the Benefit Code Key.

Journey Level Prevailing Wage Rates for the Effective Date: 10/28/24

<u>County</u>	<u>Trade</u>	<u>Job Classification</u>	<u>Wage</u>	<u>Holiday</u>	<u>Overtime</u>	<u>Note</u>	<u>*Risk Class</u>
Skagit	Asbestos Abatement Workers	Journey Level	\$63.87	5D	1H		View
Skagit	Boilermakers	Journey Level	\$81.48	5N	1C		View
Skagit	Brick Mason	Journey Level	\$71.82	7E	1N		View
Skagit	Brick Mason	Pointer-Caulker-Cleaner	\$71.82	7E	1N		View
Skagit	Building Service Employees	Janitor	\$16.28		1		View
Skagit	Building Service Employees	Shampooer	\$16.28		1		View
Skagit	Building Service Employees	Waxer	\$16.28		1		View
Skagit	Building Service Employees	Window Cleaner	\$16.28		1		View
Skagit	Cabinet Makers (In Shop)	Journey Level	\$18.85		1		View
Skagit	Carpenters	Acoustical Worker	\$78.96	15J	11U		View
Skagit	Carpenters	Bridge Dock and Wharf Carpenter	\$80.50	15J	11U	9L	View
Skagit	Carpenters	Floor Layer & Floor Finisher	\$78.96	15J	11U		View
Skagit	Carpenters	General Carpenter	\$78.96	15J	11U		View
Skagit	Carpenters	Scaffold Erector	\$78.96	15J	11U		View
Skagit	Cement Masons	Application of all Composition Mastic	\$77.30	15J	4U		View
Skagit	Cement Masons	Application of all Epoxy Material	\$76.78	15J	4U		View
Skagit	Cement Masons	Application of all Plastic Material	\$77.30	15J	4U		View
Skagit	Cement Masons	Application of Sealing Compound	\$76.78	15J	4U		View
Skagit	Cement Masons	Application of Underlayment	\$77.30	15J	4U		View
Skagit	Cement Masons	Building General	\$76.78	15J	4U		View
Skagit	Cement Masons	Composition or Kalman Floors	\$77.30	15J	4U		View
Skagit	Cement Masons	Concrete Paving	\$76.78	15J	4U		View
Skagit	Cement Masons	Curb & Gutter Machine	\$77.30	15J	4U		View
Skagit	Cement Masons	Curb & Gutter, Sidewalks	\$76.78	15J	4U		View
Skagit	Cement Masons	Curing Concrete	\$76.78	15J	4U		View
Skagit	Cement Masons	Finish Colored Concrete	\$77.30	15J	4U		View
Skagit	Cement Masons	Floor Grinding	\$77.30	15J	4U		View
Skagit	Cement Masons	Floor Grinding/Polisher	\$76.78	15J	4U		View
Skagit	Cement Masons	Green Concrete Saw, self-powered	\$77.30	15J	4U		View
Skagit	Cement Masons	Grouting of all Plates	\$76.78	15J	4U		View
Skagit	Cement Masons	Grouting of all Tilt-up Panels	\$76.78	15J	4U		View
Skagit	Cement Masons	Gunite Nozzleman	\$77.30	15J	4U		View

Skagit	Cement Masons	Hand Powered Grinder	\$77.30	15J	4U		View
Skagit	Cement Masons	Journey Level	\$76.78	15J	4U		View
Skagit	Cement Masons	Patching Concrete	\$76.78	15J	4U		View
Skagit	Cement Masons	Pneumatic Power Tools	\$77.30	15J	4U		View
Skagit	Cement Masons	Power Chipping & Brushing	\$77.30	15J	4U		View
Skagit	Cement Masons	Sand Blasting Architectural Finish	\$77.30	15J	4U		View
Skagit	Cement Masons	Screed & Rodding Machine	\$77.30	15J	4U		View
Skagit	Cement Masons	Spackling or Skim Coat Concrete	\$76.78	15J	4U		View
Skagit	Cement Masons	Troweling Machine Operator	\$77.30	15J	4U		View
Skagit	Cement Masons	Troweling Machine Operator on Colored Slabs	\$77.30	15J	4U		View
Skagit	Cement Masons	Tunnel Workers	\$77.30	15J	4U		View
Skagit	Divers & Tenders	Bell/Vehicle/Submersible Operator (not under pressure)	\$156.25	15J	11T	9I	View
Skagit	Divers & Tenders	Dive Supervisor	\$157.75	15J	11T	9I	View
Skagit	Divers & Tenders	Diver	\$156.25	15J	11T	9I	View
Skagit	Divers & Tenders	Diver Tender	\$86.86	15J	11T	9I	View
Skagit	Divers & Tenders	Hyperbaric Worker - Compressed Air Worker 0-30.00 PSI	\$118.99	15J	11U		View
Skagit	Divers & Tenders	Hyperbaric Worker - Compressed Air Worker 0-30.00 PSI	\$109.76	15J	11U		View
Skagit	Divers & Tenders	Hyperbaric Worker - Compressed Air Worker 44.01 - 54.00 PSI	\$128.22	15J	11U		View
Skagit	Divers & Tenders	Hyperbaric Worker - Compressed Air Worker 54.01 - 60.00 PSI	\$137.45	15J	11U		View
Skagit	Divers & Tenders	Hyperbaric Worker - Compressed Air Worker 60.01 - 64.00 PSI	\$146.67	15J	11U		View
Skagit	Divers & Tenders	Hyperbaric Worker - Compressed Air Worker 64.01 - 68.00 PSI	\$155.90	15J	11U		View
Skagit	Divers & Tenders	Hyperbaric Worker - Compressed Air Worker 68.01 - 70.00 PSI	\$165.13	15J	11U		View
Skagit	Divers & Tenders	Hyperbaric Worker - Compressed Air Worker 70.01 - 72.00 PSI	\$174.36	15J	11U		View
Skagit	Divers & Tenders	Hyperbaric Worker - Compressed Air Worker 72.01 - 74.00 PSI	\$183.59	15J	11U		View
Skagit	Divers & Tenders	Lead Diver (Dive Master)	\$101.32	15J	11T	9I	View
Skagit	Divers & Tenders	Manifold Operator (Life Support Technician)	\$86.86	15J	11T	9I	View
Skagit	Divers & Tenders	Remote Operated Vehicle Operator/Technician	\$86.86	15J	11T	9I	View
Skagit	Divers & Tenders	Remote Operated Vehicle Operator/Technician	\$86.86	15J	11T	9I	View
Skagit	Divers & Tenders	Remote Operated Vehicle Tender	\$80.55	15J	11T	9I	View
Skagit	Divers & Tenders	Stand-by Diver	\$96.32	15J	11T	9I	View
Skagit	Dredge Workers	Assistant Engineer	\$83.92	5D	3F		View
Skagit	Dredge Workers	Assistant Mate (Deckhand)	\$83.28	5D	3F		View
Skagit	Dredge Workers	Boatmen	\$83.92	5D	3F		View
Skagit	Dredge Workers	Engineer Welder	\$85.53	5D	3F		View
Skagit	Dredge Workers	Leverman, Hydraulic	\$87.24	5D	3F		View
Skagit	Dredge Workers	Mates	\$83.92	5D	3F		View
Skagit	Dredge Workers	Oiler	\$83.28	5D	3F		View

Skagit	Drywall Applicator	Journey Level	\$78.76	<u>15O</u>	<u>11S</u>		View
Skagit	Drywall Tapers	Journey Level	\$78.76	<u>15O</u>	<u>11S</u>		View
Skagit	Electrical Fixture Maintenance Workers	Journey Level	\$21.48		<u>1</u>		View
Skagit	Electricians - Inside	Cable Splicer	\$95.85	<u>7H</u>	<u>1E</u>		View
Skagit	Electricians - Inside	Construction Stock Person	\$46.03	<u>7H</u>	<u>1D</u>		View
Skagit	Electricians - Inside	Journey Level	\$89.75	<u>7H</u>	<u>1E</u>		View
Skagit	Electricians - Motor Shop	Craftsman	\$16.28		<u>1</u>		View
Skagit	Electricians - Motor Shop	Journey Level	\$16.28		<u>1</u>		View
Skagit	Electricians - Powerline Construction	Cable Splicer	\$97.76	<u>5A</u>	<u>4D</u>		View
Skagit	Electricians - Powerline Construction	Certified Line Welder	\$89.71	<u>5A</u>	<u>4D</u>		View
Skagit	Electricians - Powerline Construction	Groundperson	\$56.79	<u>5A</u>	<u>4D</u>		View
Skagit	Electricians - Powerline Construction	Heavy Line Equipment Operator	\$89.71	<u>5A</u>	<u>4D</u>		View
Skagit	Electricians - Powerline Construction	Journey Level Lineperson	\$89.71	<u>5A</u>	<u>4D</u>		View
Skagit	Electricians - Powerline Construction	Line Equipment Operator	\$77.13	<u>5A</u>	<u>4D</u>		View
Skagit	Electricians - Powerline Construction	Meter Installer	\$56.79	<u>5A</u>	<u>4D</u>	<u>8W</u>	View
Skagit	Electricians - Powerline Construction	Pole Sprayer	\$89.71	<u>5A</u>	<u>4D</u>		View
Skagit	Electricians - Powerline Construction	Powderperson	\$66.84	<u>5A</u>	<u>4D</u>		View
Skagit	Electronic Technicians	Electronic Technicians Journey Level	\$58.51	<u>5B</u>	<u>1B</u>		View
Skagit	Elevator Constructors	Mechanic	\$111.26	<u>7D</u>	<u>4A</u>		View
Skagit	Elevator Constructors	Mechanic In Charge	\$120.27	<u>7D</u>	<u>4A</u>		View
Skagit	Fabricated Precast Concrete Products	Journey Level	\$16.28		<u>1</u>		View
Skagit	Fabricated Precast Concrete Products	Journey Level - In-Factory Work Only	\$16.28		<u>1</u>		View
Skagit	Fence Erectors	Fence Erector	\$54.65	<u>15J</u>	<u>11P</u>	<u>8Y</u>	View
Skagit	Fence Erectors	Fence Laborer	\$54.65	<u>15J</u>	<u>11P</u>	<u>8Y</u>	View
Skagit	Flaggers	Journey Level	\$54.65	<u>15J</u>	<u>11P</u>	<u>8Y</u>	View
Skagit	Glaziers	Journey Level	\$82.16	<u>7L</u>	<u>1Y</u>		View
Skagit	Heat & Frost Insulators And Asbestos Workers	Journey Level	\$91.81	<u>15H</u>	<u>11C</u>		View
Skagit	Heating Equipment Mechanics	Mechanic	\$92.96	<u>7F</u>	<u>1E</u>		View
Skagit	Hod Carriers & Mason Tenders	Journey Level	\$67.38	<u>15J</u>	<u>11P</u>	<u>8Y</u>	View
Skagit	Industrial Power Vacuum Cleaner	Journey Level	\$16.28		<u>1</u>		View
Skagit	Inland Boatmen	Boat Operator	\$61.41	<u>5B</u>	<u>1K</u>		View
Skagit	Inland Boatmen	Cook	\$56.48	<u>5B</u>	<u>1K</u>		View
Skagit	Inland Boatmen	Deckhand	\$57.48	<u>5B</u>	<u>1K</u>		View
Skagit	Inland Boatmen	Deckhand Engineer	\$58.81	<u>5B</u>	<u>1K</u>		View
Skagit	Inland Boatmen	Launch Operator	\$58.89	<u>5B</u>	<u>1K</u>		View
Skagit	Inland Boatmen	Mate	\$57.31	<u>5B</u>	<u>1K</u>		View
Skagit	Inspection/Cleaning/Sealing Of Sewer & Water Systems By Remote	Cleaner Operator	\$51.27	<u>15M</u>	<u>11O</u>		View

	Control						
Skagit	Inspection/Cleaning/Sealing Of Sewer & Water Systems By Remote Control	Foamer Operator	\$51.27	15M	11O		View
Skagit	Inspection/Cleaning/Sealing Of Sewer & Water Systems By Remote Control	Grout Truck Operator	\$51.27	15M	11O		View
Skagit	Inspection/Cleaning/Sealing Of Sewer & Water Systems By Remote Control	Head Operator	\$49.20	15M	11O		View
Skagit	Inspection/Cleaning/Sealing Of Sewer & Water Systems By Remote Control	Technician	\$42.99	15M	11O		View
Skagit	Inspection/Cleaning/Sealing Of Sewer & Water Systems By Remote Control	TV Truck Operator	\$46.10	15M	11O		View
Skagit	Insulation Applicators	Journey Level	\$78.96	15J	11U		View
Skagit	Ironworkers	Journeyman	\$87.80	15K	11N		View
Skagit	Laborers	Air, Gas Or Electric Vibrating Screed	\$63.87	15J	11P	8Y	View
Skagit	Laborers	Airtrac Drill Operator	\$65.75	15J	11P	8Y	View
Skagit	Laborers	Ballast Regular Machine	\$63.87	15J	11P	8Y	View
Skagit	Laborers	Batch Weighman	\$54.65	15J	11P	8Y	View
Skagit	Laborers	Brick Pavers	\$63.87	15J	11P	8Y	View
Skagit	Laborers	Brush Cutter	\$63.87	15J	11P	8Y	View
Skagit	Laborers	Brush Hog Feeder	\$63.87	15J	11P	8Y	View
Skagit	Laborers	Burner	\$63.87	15J	11P	8Y	View
Skagit	Laborers	Caisson Worker	\$65.75	15J	11P	8Y	View
Skagit	Laborers	Carpenter Tender	\$63.87	15J	11P	8Y	View
Skagit	Laborers	Cement Dumper-paving	\$64.98	15J	11P	8Y	View
Skagit	Laborers	Cement Finisher Tender	\$63.87	15J	11P	8Y	View
Skagit	Laborers	Change House Or Dry Shack	\$63.87	15J	11P	8Y	View
Skagit	Laborers	Chipping Gun (30 Lbs. And Over)	\$64.98	15J	11P	8Y	View
Skagit	Laborers	Chipping Gun (Under 30 Lbs.)	\$63.87	15J	11P	8Y	View
Skagit	Laborers	Choker Setter	\$63.87	15J	11P	8Y	View
Skagit	Laborers	Chuck Tender	\$63.87	15J	11P	8Y	View
Skagit	Laborers	Clary Power Spreader	\$64.98	15J	11P	8Y	View
Skagit	Laborers	Clean-up Laborer	\$63.87	15J	11P	8Y	View
Skagit	Laborers	Concrete Dumper/Chute Operator	\$64.98	15J	11P	8Y	View
Skagit	Laborers	Concrete Form Stripper	\$63.87	15J	11P	8Y	View
Skagit	Laborers	Concrete Placement Crew	\$64.98	15J	11P	8Y	View
Skagit	Laborers	Concrete Saw Operator/Core Driller	\$64.98	15J	11P	8Y	View
Skagit	Laborers	Crusher Feeder	\$54.65	15J	11P	8Y	View
Skagit	Laborers	Curing Laborer	\$63.87	15J	11P	8Y	View
Skagit	Laborers	Demolition: Wrecking & Moving (Incl. Charred Material)	\$63.87	15J	11P	8Y	View
Skagit	Laborers	Ditch Digger	\$63.87	15J	11P	8Y	View
Skagit	Laborers	Diver	\$65.75	15J	11P	8Y	View
Skagit	Laborers	Drill Operator (Hydraulic, Diamond)	\$64.98	15J	11P	8Y	View
Skagit	Laborers	Dry Stack Walls	\$63.87	15J	11P	8Y	View

Skagit	Laborers	Dump Person	\$63.87	15J	11P	8Y	View
Skagit	Laborers	Epoxy Technician	\$63.87	15J	11P	8Y	View
Skagit	Laborers	Erosion Control Worker	\$63.87	15J	11P	8Y	View
Skagit	Laborers	Faller & Bucker Chain Saw	\$64.98	15J	11P	8Y	View
Skagit	Laborers	Fine Graders	\$63.87	15J	11P	8Y	View
Skagit	Laborers	Firewatch	\$54.65	15J	11P	8Y	View
Skagit	Laborers	Form Setter	\$64.98	15J	11P	8Y	View
Skagit	Laborers	Gabian Basket Builders	\$63.87	15J	11P	8Y	View
Skagit	Laborers	General Laborer	\$63.87	15J	11P	8Y	View
Skagit	Laborers	Grade Checker & Transit Person	\$67.38	15J	11P	8Y	View
Skagit	Laborers	Grinders	\$63.87	15J	11P	8Y	View
Skagit	Laborers	Grout Machine Tender	\$63.87	15J	11P	8Y	View
Skagit	Laborers	Groutmen (Pressure) Including Post Tension Beams	\$64.98	15J	11P	8Y	View
Skagit	Laborers	Guardrail Erector	\$63.87	15J	11P	8Y	View
Skagit	Laborers	Hazardous Waste Worker (Level A)	\$65.75	15J	11P	8Y	View
Skagit	Laborers	Hazardous Waste Worker (Level B)	\$64.98	15J	11P	8Y	View
Skagit	Laborers	Hazardous Waste Worker (Level C)	\$63.87	15J	11P	8Y	View
Skagit	Laborers	High Scaler	\$65.75	15J	11P	8Y	View
Skagit	Laborers	Jackhammer	\$64.98	15J	11P	8Y	View
Skagit	Laborers	Laserbeam Operator	\$64.98	15J	11P	8Y	View
Skagit	Laborers	Maintenance Person	\$63.87	15J	11P	8Y	View
Skagit	Laborers	Manhole Builder-Mudman	\$64.98	15J	11P	8Y	View
Skagit	Laborers	Material Yard Person	\$63.87	15J	11P	8Y	View
Skagit	Laborers	Mold Abatement Worker	\$63.87	15J	11P	8Y	View
Skagit	Laborers	Motorman-Dinky Locomotive	\$67.48	15J	11P	8Y	View
Skagit	Laborers	nozzleman (concrete pump, green cutter when using combination of high pressure air & water on concrete & rock, sandblast, gunite, shotcrete, water blaster, vacuum blaster)	\$67.38	15J	11P	8Y	View
Skagit	Laborers	Pavement Breaker	\$64.98	15J	11P	8Y	View
Skagit	Laborers	Pilot Car	\$54.65	15J	11P	8Y	View
Skagit	Laborers	Pipe Layer (Lead)	\$67.38	15J	11P	8Y	View
Skagit	Laborers	Pipe Layer/Tailor	\$64.98	15J	11P	8Y	View
Skagit	Laborers	Pipe Pot Tender	\$64.98	15J	11P	8Y	View
Skagit	Laborers	Pipe Reliner	\$64.98	15J	11P	8Y	View
Skagit	Laborers	Pipe Wrapper	\$64.98	15J	11P	8Y	View
Skagit	Laborers	Pot Tender	\$63.87	15J	11P	8Y	View
Skagit	Laborers	Powderman	\$65.75	15J	11P	8Y	View
Skagit	Laborers	Powderman's Helper	\$63.87	15J	11P	8Y	View
Skagit	Laborers	Power Jacks	\$64.98	15J	11P	8Y	View
Skagit	Laborers	Railroad Spike Puller - Power	\$64.98	15J	11P	8Y	View
Skagit	Laborers	Raker - Asphalt	\$67.38	15J	11P	8Y	View
Skagit	Laborers	Re-timberman	\$65.75	15J	11P	8Y	View
Skagit	Laborers	Remote Equipment Operator	\$64.98	15J	11P	8Y	View
Skagit	Laborers	Rigger/Signal Person	\$64.98	15J	11P	8Y	View
Skagit	Laborers	Rip Rap Person	\$63.87	15J	11P	8Y	View

Skagit	Laborers	Rivet Buster	\$64.98	15J	11P	8Y	View
Skagit	Laborers	Rodder	\$64.98	15J	11P	8Y	View
Skagit	Laborers	Scaffold Erector	\$63.87	15J	11P	8Y	View
Skagit	Laborers	Scale Person	\$63.87	15J	11P	8Y	View
Skagit	Laborers	Sloper (Over 20")	\$64.98	15J	11P	8Y	View
Skagit	Laborers	Sloper Sprayer	\$63.87	15J	11P	8Y	View
Skagit	Laborers	Spreader (Concrete)	\$64.98	15J	11P	8Y	View
Skagit	Laborers	Stake Hopper	\$63.87	15J	11P	8Y	View
Skagit	Laborers	Stock Piler	\$63.87	15J	11P	8Y	View
Skagit	Laborers	Swinging Stage/Boatswain Chair	\$54.65	15J	11P	8Y	View
Skagit	Laborers	Tamper & Similar Electric, Air & Gas Operated Tools	\$64.98	15J	11P	8Y	View
Skagit	Laborers	Tamper (Multiple & Self-propelled)	\$64.98	15J	11P	8Y	View
Skagit	Laborers	Timber Person - Sewer (Lagger, Shorer & Cribber)	\$64.98	15J	11P	8Y	View
Skagit	Laborers	Toolroom Person (at Jobsite)	\$63.87	15J	11P	8Y	View
Skagit	Laborers	Topper	\$63.87	15J	11P	8Y	View
Skagit	Laborers	Track Laborer	\$63.87	15J	11P	8Y	View
Skagit	Laborers	Track Liner (Power)	\$64.98	15J	11P	8Y	View
Skagit	Laborers	Traffic Control Laborer	\$58.20	15J	11P	9C	View
Skagit	Laborers	Traffic Control Supervisor	\$61.47	15J	11P	9C	View
Skagit	Laborers	Truck Spotter	\$63.87	15J	11P	8Y	View
Skagit	Laborers	Tugger Operator	\$64.98	15J	11P	8Y	View
Skagit	Laborers	Tunnel Work-Compressed Air Worker 0-30 psi	\$200.40	15J	11P	9B	View
Skagit	Laborers	Tunnel Work-Compressed Air Worker 30.01-44.00 psi	\$205.43	15J	11P	9B	View
Skagit	Laborers	Tunnel Work-Compressed Air Worker 44.01-54.00 psi	\$209.11	15J	11P	9B	View
Skagit	Laborers	Tunnel Work-Compressed Air Worker 54.01-60.00 psi	\$214.81	15J	11P	9B	View
Skagit	Laborers	Tunnel Work-Compressed Air Worker 60.01-64.00 psi	\$216.93	15J	11P	9B	View
Skagit	Laborers	Tunnel Work-Compressed Air Worker 64.01-68.00 psi	\$222.03	15J	11P	9B	View
Skagit	Laborers	Tunnel Work-Compressed Air Worker 68.01-70.00 psi	\$223.93	15J	11P	9B	View
Skagit	Laborers	Tunnel Work-Compressed Air Worker 70.01-72.00 psi	\$225.93	15J	11P	9B	View
Skagit	Laborers	Tunnel Work-Compressed Air Worker 72.01-74.00 psi	\$227.93	15J	11P	9B	View
Skagit	Laborers	Tunnel Work-Guage and Lock Tender	\$67.48	15J	11P	8Y	View
Skagit	Laborers	Tunnel Work-Miner	\$67.48	15J	11P	8Y	View
Skagit	Laborers	Vibrator	\$64.98	15J	11P	8Y	View
Skagit	Laborers	Vinyl Seamer	\$63.87	15J	11P	8Y	View
Skagit	Laborers	Watchman	\$49.97	15J	11P	8Y	View
Skagit	Laborers	Welder	\$64.98	15J	11P	8Y	View
Skagit	Laborers	Well Point Laborer	\$64.98	15J	11P	8Y	View
Skagit	Laborers	Window Washer/Cleaner	\$49.97	15J	11P	8Y	View

Skagit	Laborers - Underground Sewer & Water	General Laborer & Topman	\$63.87	<u>15J</u>	<u>11P</u>	<u>8Y</u>	View
Skagit	Laborers - Underground Sewer & Water	Pipe Layer	\$64.98	<u>15J</u>	<u>11P</u>	<u>8Y</u>	View
Skagit	Landscape Construction	Landscape Construction/Landscaping Or Planting Laborers	\$49.97	<u>15J</u>	<u>11P</u>	<u>8Y</u>	View
Skagit	Landscape Construction	Landscape Operator	\$83.83	<u>15J</u>	<u>11G</u>	<u>8X</u>	View
Skagit	Landscape Maintenance	Groundskeeper	\$16.28		<u>1</u>		View
Skagit	Lathers	Journey Level	\$78.76	<u>15O</u>	<u>11S</u>		View
Skagit	Marble Setters	Journey Level	\$71.82	<u>7E</u>	<u>1N</u>		View
Skagit	Metal Fabrication (In Shop)	Fitter	\$16.28		<u>1</u>		View
Skagit	Metal Fabrication (In Shop)	Laborer	\$16.28		<u>1</u>		View
Skagit	Metal Fabrication (In Shop)	Machine Operator	\$16.28		<u>1</u>		View
Skagit	Metal Fabrication (In Shop)	Painter	\$16.28		<u>1</u>		View
Skagit	Metal Fabrication (In Shop)	Welder	\$16.28		<u>1</u>		View
Skagit	Millwright	Journey Level	\$80.28	<u>15J</u>	<u>4C</u>		View
Skagit	Modular Buildings	Journey Level	\$16.28		<u>1</u>		View
Skagit	Painters	Journey Level	\$51.71	<u>6Z</u>	<u>11J</u>		View
Skagit	Pile Driver	Crew Tender	\$86.81	<u>15J</u>	<u>11U</u>	<u>9L</u>	View
Skagit	Pile Driver	Journey Level	\$80.50	<u>15J</u>	<u>11U</u>	<u>9L</u>	View
Skagit	Plasterers	Journey Level	\$73.54	<u>7Q</u>	<u>1R</u>		View
Skagit	Plasterers	Nozzleman	\$77.54	<u>7Q</u>	<u>1R</u>		View
Skagit	Playground & Park Equipment Installers	Journey Level	\$16.28		<u>1</u>		View
Skagit	Plumbers & Pipefitters	Journey Level	\$90.87	<u>5A</u>	<u>1G</u>		View
Skagit	Power Equipment Operators	Asphalt Plant Operators	\$85.22	<u>15J</u>	<u>11G</u>	<u>8X</u>	View
Skagit	Power Equipment Operators	Assistant Engineer	\$80.17	<u>15J</u>	<u>11G</u>	<u>8X</u>	View
Skagit	Power Equipment Operators	Barrier Machine (zipper)	\$84.48	<u>15J</u>	<u>11G</u>	<u>8X</u>	View
Skagit	Power Equipment Operators	Batch Plant Operator: concrete	\$84.48	<u>15J</u>	<u>11G</u>	<u>8X</u>	View
Skagit	Power Equipment Operators	Boat Operator	\$87.82	<u>7A</u>	<u>11H</u>	<u>8X</u>	View
Skagit	Power Equipment Operators	Bobcat	\$80.17	<u>15J</u>	<u>11G</u>	<u>8X</u>	View
Skagit	Power Equipment Operators	Brokk - Remote Demolition Equipment	\$80.17	<u>15J</u>	<u>11G</u>	<u>8X</u>	View
Skagit	Power Equipment Operators	Brooms	\$80.17	<u>15J</u>	<u>11G</u>	<u>8X</u>	View
Skagit	Power Equipment Operators	Bump Cutter	\$84.48	<u>15J</u>	<u>11G</u>	<u>8X</u>	View
Skagit	Power Equipment Operators	Cableways	\$85.22	<u>15J</u>	<u>11G</u>	<u>8X</u>	View
Skagit	Power Equipment Operators	Chipper	\$84.48	<u>15J</u>	<u>11G</u>	<u>8X</u>	View
Skagit	Power Equipment Operators	Compressor	\$80.17	<u>15J</u>	<u>11G</u>	<u>8X</u>	View
Skagit	Power Equipment Operators	Concrete Finish Machine - Laser Screed	\$80.17	<u>15J</u>	<u>11G</u>	<u>8X</u>	View
Skagit	Power Equipment Operators	Concrete Pump - Mounted Or Trailer High Pressure Line Pump, Pump High Pressure	\$83.83	<u>15J</u>	<u>11G</u>	<u>8X</u>	View
Skagit	Power Equipment Operators	Concrete Pump: Truck Mount With Boom Attachment Over 42 M	\$85.22	<u>15J</u>	<u>11G</u>	<u>8X</u>	View
Skagit	Power Equipment Operators	Concrete Pump: Truck Mount With Boom Attachment Up To 42m	\$84.48	<u>15J</u>	<u>11G</u>	<u>8X</u>	View
Skagit	Power Equipment Operators	Conveyors	\$83.83	<u>15J</u>	<u>11G</u>	<u>8X</u>	View
Skagit	Power Equipment Operators	Cranes Friction: 200 tons and over	\$90.46	<u>7A</u>	<u>11H</u>	<u>8X</u>	View
Skagit	Power Equipment Operators	Cranes, A-frame: 10 tons and under	\$82.59	<u>7A</u>	<u>11H</u>	<u>8X</u>	View

Skagit	Power Equipment Operators	Cranes: 100 tons through 199 tons, or 150' of boom (including jib with attachments)	\$88.67	7A	11H	8X	View
Skagit	Power Equipment Operators	Cranes: 20 tons through 44 tons with attachments	\$87.03	7A	11H	8X	View
Skagit	Power Equipment Operators	Cranes: 200 tons- 299 tons, or 250' of boom including jib with attachments	\$89.60	7A	11H	8X	View
Skagit	Power Equipment Operators	Cranes: 300 tons and over or 300' of boom including jib with attachments	\$90.46	7A	11H	8X	View
Skagit	Power Equipment Operators	Cranes: 45 tons through 99 tons, under 150' of boom(including jib with attachments)	\$87.82	7A	11H	8X	View
Skagit	Power Equipment Operators	Cranes: Friction cranes through 199 tons	\$89.60	7A	11H	8X	View
Skagit	Power Equipment Operators	Cranes: through 19 tons with attachments, a-frame over 10 tons	\$86.36	7A	11H	8X	View
Skagit	Power Equipment Operators	Crusher	\$84.48	15J	11G	8X	View
Skagit	Power Equipment Operators	Deck Engineer/Deck Winches (power)	\$84.48	15J	11G	8X	View
Skagit	Power Equipment Operators	Derricks, On Building Work	\$87.82	7A	11H	8X	View
Skagit	Power Equipment Operators	Dozers D-9 & Under	\$83.83	15J	11G	8X	View
Skagit	Power Equipment Operators	Drill Oilers: Auger Type, Truck Or Crane Mount	\$83.83	15J	11G	8X	View
Skagit	Power Equipment Operators	Drilling Machine	\$86.10	15J	11G	8X	View
Skagit	Power Equipment Operators	Elevator and man-lift: permanent and shaft type	\$80.17	15J	11G	8X	View
Skagit	Power Equipment Operators	Finishing Machine, Bidwell And Gamaco & Similar Equipment	\$84.48	15J	11G	8X	View
Skagit	Power Equipment Operators	Forklift: 3000 lbs and over with attachments	\$83.83	15J	11G	8X	View
Skagit	Power Equipment Operators	Forklifts: under 3000 lbs. with attachments	\$80.17	15J	11G	8X	View
Skagit	Power Equipment Operators	Grade Engineer: Using Blue Prints, Cut Sheets, Etc	\$84.48	15J	11G	8X	View
Skagit	Power Equipment Operators	Gradechecker/Stakeman	\$80.17	15J	11G	8X	View
Skagit	Power Equipment Operators	Guardrail Punch	\$84.48	15J	11G	8X	View
Skagit	Power Equipment Operators	Hard Tail End Dump Articulating Off- Road Equipment 45 Yards. & Over	\$85.22	15J	11G	8X	View
Skagit	Power Equipment Operators	Hard Tail End Dump Articulating Off-road Equipment Under 45 Yards	\$84.48	15J	11G	8X	View
Skagit	Power Equipment Operators	Horizontal/Directional Drill Locator	\$83.83	15J	11G	8X	View
Skagit	Power Equipment Operators	Horizontal/Directional Drill Operator	\$84.48	15J	11G	8X	View
Skagit	Power Equipment Operators	Hydralifts/Boom Trucks Over 10 Tons	\$86.36	7A	11H	8X	View
Skagit	Power Equipment Operators	Hydralifts/boom trucks: 10 tons and under	\$82.59	7A	11H	8X	View
Skagit	Power Equipment Operators	Leverman	\$86.96	15J	11G	8X	View
Skagit	Power Equipment Operators	Loader, Overhead, 6 Yards. But Not Including 8 Yards	\$85.22	15J	11G	8X	View
Skagit	Power Equipment Operators	Loaders, Overhead Under 6 Yards	\$84.48	15J	11G	8X	View

Skagit	Power Equipment Operators	Loaders, Plant Feed	\$84.48	15J	11G	8X	View
Skagit	Power Equipment Operators	Loaders: Elevating Type Belt	\$83.83	15J	11G	8X	View
Skagit	Power Equipment Operators	Locomotives, All	\$84.48	15J	11G	8X	View
Skagit	Power Equipment Operators	Material Transfer Device	\$84.48	15J	11G	8X	View
Skagit	Power Equipment Operators	Mechanics: All (Leadmen - \$0.50 per hour over mechanic)	\$86.10	15J	11G	8X	View
Skagit	Power Equipment Operators	Motor Patrol Graders	\$85.22	15J	11G	8X	View
Skagit	Power Equipment Operators	Mucking Machine, Mole, Tunnel Drill, Boring, Road Header And/or Shield	\$85.22	15J	11G	8X	View
Skagit	Power Equipment Operators	Oil Distributors, Blower Distribution & Mulch Seeding Operator	\$80.17	15J	11G	8X	View
Skagit	Power Equipment Operators	Outside Hoists (Elevators and Manlifts), Air Tuggers, Strato	\$83.83	15J	11G	8X	View
Skagit	Power Equipment Operators	Overhead, bridge type Crane: 20 tons through 44 tons	\$87.03	7A	11H	8X	View
Skagit	Power Equipment Operators	Overhead, bridge type: 100 tons and over	\$88.67	7A	11H	8X	View
Skagit	Power Equipment Operators	Overhead, bridge type: 45 tons through 99 tons	\$87.82	7A	11H	8X	View
Skagit	Power Equipment Operators	Pavement Breaker	\$80.17	15J	11G	8X	View
Skagit	Power Equipment Operators	Pile Driver (other Than Crane Mount)	\$84.48	15J	11G	8X	View
Skagit	Power Equipment Operators	Plant Oiler - Asphalt, Crusher	\$83.83	15J	11G	8X	View
Skagit	Power Equipment Operators	Posthole Digger, Mechanical	\$80.17	15J	11G	8X	View
Skagit	Power Equipment Operators	Power Plant	\$80.17	15J	11G	8X	View
Skagit	Power Equipment Operators	Pumps - Water	\$80.17	15J	11G	8X	View
Skagit	Power Equipment Operators	Quad 9, Hd 41, D10 And Over	\$85.22	15J	11G	8X	View
Skagit	Power Equipment Operators	Quick Tower: no cab, under 100 feet in height base to boom	\$84.48	15J	11G	8X	View
Skagit	Power Equipment Operators	Remote Control Operator On Rubber Tired Earth Moving Equipment	\$85.22	15J	11G	8X	View
Skagit	Power Equipment Operators	Rigger and Bellman	\$82.59	7A	11H	8X	View
Skagit	Power Equipment Operators	Rigger/Signal Person, Bellman(Certified)	\$86.36	7A	11H	8X	View
Skagit	Power Equipment Operators	Rollagon	\$85.22	15J	11G	8X	View
Skagit	Power Equipment Operators	Roller, Other Than Plant Mix	\$80.17	15J	11G	8X	View
Skagit	Power Equipment Operators	Roller, Plant Mix Or Multi-lift Materials	\$83.83	15J	11G	8X	View
Skagit	Power Equipment Operators	Roto-mill, Roto-grinder	\$84.48	15J	11G	8X	View
Skagit	Power Equipment Operators	Saws - Concrete	\$83.83	15J	11G	8X	View
Skagit	Power Equipment Operators	Scraper, Self Propelled Under 45 Yards	\$84.48	15J	11G	8X	View
Skagit	Power Equipment Operators	Scrapers - Concrete & Carry All	\$83.83	15J	11G	8X	View
Skagit	Power Equipment Operators	Scrapers, Self-propelled: 45 Yards And Over	\$85.22	15J	11G	8X	View
Skagit	Power Equipment Operators	Service Engineers: Equipment	\$83.83	15J	11G	8X	View
Skagit	Power Equipment Operators	Shotcrete/Gunite Equipment	\$80.17	15J	11G	8X	View
Skagit	Power Equipment Operators	Shovel, Excavator, Backhoe, Tractors Under 15 Metric Tons	\$83.83	15J	11G	8X	View

Skagit	Power Equipment Operators	Shovel, Excavator, Backhoe: Over 30 Metric Tons To 50 Metric Tons	\$85.22	15J	11G	8X	View
Skagit	Power Equipment Operators	Shovel, Excavator, Backhoes, Tractors: 15 To 30 Metric Tons	\$84.48	15J	11G	8X	View
Skagit	Power Equipment Operators	Shovel, Excavator, Backhoes: Over 50 Metric Tons To 90 Metric Tons	\$86.10	15J	11G	8X	View
Skagit	Power Equipment Operators	Shovel, Excavator, Backhoes: Over 90 Metric Tons	\$86.96	15J	11G	8X	View
Skagit	Power Equipment Operators	Slipform Pavers	\$85.22	15J	11G	8X	View
Skagit	Power Equipment Operators	Spreader, Toppers & Screedman	\$85.22	15J	11G	8X	View
Skagit	Power Equipment Operators	Subgrader Trimmer	\$84.48	15J	11G	8X	View
Skagit	Power Equipment Operators	Tower Bucket Elevators	\$83.83	15J	11G	8X	View
Skagit	Power Equipment Operators	Tower Crane: over 175' through 250' in height, base to boom	\$89.60	7A	11H	8X	View
Skagit	Power Equipment Operators	Tower crane: up to 175' in height base to boom	\$88.67	7A	11H	8X	View
Skagit	Power Equipment Operators	Tower Cranes: over 250' in height from base to boom	\$90.46	7A	11H	8X	View
Skagit	Power Equipment Operators	Transporters, All Track Or Truck Type	\$85.22	15J	11G	8X	View
Skagit	Power Equipment Operators	Trenching Machines	\$83.83	15J	11G	8X	View
Skagit	Power Equipment Operators	Truck Crane Oiler/Driver: 100 tons and over	\$87.03	7A	11H	8X	View
Skagit	Power Equipment Operators	Truck crane oiler/driver: under 100 tons	\$86.36	7A	11H	8X	View
Skagit	Power Equipment Operators	Truck Mount Portable Conveyor	\$84.48	15J	11G	8X	View
Skagit	Power Equipment Operators	Vac Truck (Vactor Guzzler, Hydro Excavator)	\$84.48	15J	11G	8X	View
Skagit	Power Equipment Operators	Welder	\$85.22	15J	11G	8X	View
Skagit	Power Equipment Operators	Wheel Tractors, Farmall Type	\$80.17	15J	11G	8X	View
Skagit	Power Equipment Operators	Yo Yo Pay Dozer	\$84.48	15J	11G	8X	View
Skagit	Power Equipment Operators-Underground Sewer & Water	Asphalt Plant Operators	\$85.22	15J	11G	8X	View
Skagit	Power Equipment Operators-Underground Sewer & Water	Assistant Engineer	\$80.17	15J	11G	8X	View
Skagit	Power Equipment Operators-Underground Sewer & Water	Barrier Machine (zipper)	\$84.48	15J	11G	8X	View
Skagit	Power Equipment Operators-Underground Sewer & Water	Batch Plant Operator, Concrete	\$84.48	15J	11G	8X	View
Skagit	Power Equipment Operators-Underground Sewer & Water	Boat Operator	\$87.82	7A	11H	8X	View
Skagit	Power Equipment Operators-Underground Sewer & Water	Bobcat	\$80.17	15J	11G	8X	View
Skagit	Power Equipment Operators-Underground Sewer & Water	Brokk - Remote Demolition Equipment	\$80.17	15J	11G	8X	View
Skagit	Power Equipment Operators-Underground Sewer & Water	Brooms	\$80.17	15J	11G	8X	View
Skagit	Power Equipment Operators-Underground Sewer & Water	Bump Cutter	\$84.48	15J	11G	8X	View
Skagit	Power Equipment Operators-Underground Sewer & Water	Cableways	\$85.22	15J	11G	8X	View
Skagit	Power Equipment Operators-Underground Sewer & Water	Chipper	\$84.48	15J	11G	8X	View

Skagit	Power Equipment Operators-Underground Sewer & Water	Compressor	\$80.17	15J	11G	8X	View
Skagit	Power Equipment Operators-Underground Sewer & Water	Concrete Finish Machine - Laser Screed	\$80.17	15J	11G	8X	View
Skagit	Power Equipment Operators-Underground Sewer & Water	Concrete Pump - Mounted Or Trailer High Pressure Line Pump, Pump High Pressure	\$83.83	15J	11G	8X	View
Skagit	Power Equipment Operators-Underground Sewer & Water	Concrete Pump: Truck Mount With Boom Attachment Over 42 M	\$85.22	15J	11G	8X	View
Skagit	Power Equipment Operators-Underground Sewer & Water	Concrete Pump: Truck Mount With Boom Attachment Up To 42m	\$84.48	15J	11G	8X	View
Skagit	Power Equipment Operators-Underground Sewer & Water	Conveyors	\$83.83	15J	11G	8X	View
Skagit	Power Equipment Operators-Underground Sewer & Water	Cranes Friction: 200 tons and over	\$90.46	7A	11H	8X	View
Skagit	Power Equipment Operators-Underground Sewer & Water	Cranes, A-frame: 10 tons and under	\$82.59	7A	11H	8X	View
Skagit	Power Equipment Operators-Underground Sewer & Water	Cranes: 100 tons through 199 tons, or 150' of boom (including jib with attachments)	\$88.67	7A	11H	8X	View
Skagit	Power Equipment Operators-Underground Sewer & Water	Cranes: 20 tons through 44 tons with attachments	\$87.03	7A	11H	8X	View
Skagit	Power Equipment Operators-Underground Sewer & Water	Cranes: 200 tons- 299 tons, or 250' of boom including jib with attachments	\$89.60	7A	11H	8X	View
Skagit	Power Equipment Operators-Underground Sewer & Water	Cranes: 300 tons and over or 300' of boom including jib with attachments	\$90.46	7A	11H	8X	View
Skagit	Power Equipment Operators-Underground Sewer & Water	Cranes: 45 tons through 99 tons, under 150' of boom(including jib with attachments)	\$87.82	7A	11H	8X	View
Skagit	Power Equipment Operators-Underground Sewer & Water	Cranes: Friction cranes through 199 tons	\$89.60	7A	11H	8X	View
Skagit	Power Equipment Operators-Underground Sewer & Water	Cranes: through 19 tons with attachments, a-frame over 10 tons	\$86.36	7A	11H	8X	View
Skagit	Power Equipment Operators-Underground Sewer & Water	Crusher	\$84.48	15J	11G	8X	View
Skagit	Power Equipment Operators-Underground Sewer & Water	Deck Engineer/Deck Winches (power)	\$84.48	15J	11G	8X	View
Skagit	Power Equipment Operators-Underground Sewer & Water	Derricks, On Building Work	\$87.82	7A	11H	8X	View
Skagit	Power Equipment Operators-Underground Sewer & Water	Dozers D-9 & Under	\$83.83	15J	11G	8X	View
Skagit	Power Equipment Operators-Underground Sewer & Water	Drill Oilers: Auger Type, Truck Or Crane Mount	\$83.83	15J	11G	8X	View
Skagit	Power Equipment Operators-Underground Sewer & Water	Drilling Machine	\$86.10	15J	11G	8X	View
Skagit	Power Equipment Operators-Underground Sewer & Water	Elevator and man-lift: permanent and shaft type	\$80.17	15J	11G	8X	View
Skagit	Power Equipment Operators-Underground Sewer & Water	Finishing Machine, Bidwell And Gamaco & Similar Equipment	\$84.48	15J	11G	8X	View
Skagit	Power Equipment Operators-Underground Sewer & Water	Forklift: 3000 lbs and over with attachments	\$83.83	15J	11G	8X	View
Skagit	Power Equipment Operators-Underground Sewer & Water	Forklifts: under 3000 lbs. with attachments	\$80.17	15J	11G	8X	View

Skagit	Power Equipment Operators-Underground Sewer & Water	Grade Engineer: Using Blue Prints, Cut Sheets, Etc	\$84.48	15J	11G	8X	View
Skagit	Power Equipment Operators-Underground Sewer & Water	Gradechecker/Stakeman	\$80.17	15J	11G	8X	View
Skagit	Power Equipment Operators-Underground Sewer & Water	Guardrail Punch	\$84.48	15J	11G	8X	View
Skagit	Power Equipment Operators-Underground Sewer & Water	Hard Tail End Dump Articulating Off- Road Equipment 45 Yards. & Over	\$85.22	15J	11G	8X	View
Skagit	Power Equipment Operators-Underground Sewer & Water	Hard Tail End Dump Articulating Off-road Equipment Under 45 Yards	\$84.48	15J	11G	8X	View
Skagit	Power Equipment Operators-Underground Sewer & Water	Horizontal/Directional Drill Locator	\$83.83	15J	11G	8X	View
Skagit	Power Equipment Operators-Underground Sewer & Water	Horizontal/Directional Drill Operator	\$84.48	15J	11G	8X	View
Skagit	Power Equipment Operators-Underground Sewer & Water	Hydralifts/boom trucks: 10 tons and under	\$82.59	7A	11H	8X	View
Skagit	Power Equipment Operators-Underground Sewer & Water	Hydralifts/boom trucks: over 10 tons	\$86.36	7A	11H	8X	View
Skagit	Power Equipment Operators-Underground Sewer & Water	Leverman	\$86.96	15J	11G	8X	View
Skagit	Power Equipment Operators-Underground Sewer & Water	Loader, Overhead, 6 Yards. But Not Including 8 Yards	\$85.22	15J	11G	8X	View
Skagit	Power Equipment Operators-Underground Sewer & Water	Loaders, Overhead Under 6 Yards	\$84.48	15J	11G	8X	View
Skagit	Power Equipment Operators-Underground Sewer & Water	Loaders, Plant Feed	\$84.48	15J	11G	8X	View
Skagit	Power Equipment Operators-Underground Sewer & Water	Loaders: Elevating Type Belt	\$83.83	15J	11G	8X	View
Skagit	Power Equipment Operators-Underground Sewer & Water	Locomotives, All	\$84.48	15J	11G	8X	View
Skagit	Power Equipment Operators-Underground Sewer & Water	Material Transfer Device	\$84.48	15J	11G	8X	View
Skagit	Power Equipment Operators-Underground Sewer & Water	Mechanics: All (Leadmen - \$0.50 per hour over mechanic)	\$86.10	15J	11G	8X	View
Skagit	Power Equipment Operators-Underground Sewer & Water	Motor Patrol Graders	\$85.22	15J	11G	8X	View
Skagit	Power Equipment Operators-Underground Sewer & Water	Mucking Machine, Mole, Tunnel Drill, Boring, Road Header And/or Shield	\$85.22	15J	11G	8X	View
Skagit	Power Equipment Operators-Underground Sewer & Water	Oil Distributors, Blower Distribution & Mulch Seeding Operator	\$80.17	15J	11G	8X	View
Skagit	Power Equipment Operators-Underground Sewer & Water	Outside Hoists (Elevators and Manlifts), Air Tuggers, Strato	\$83.83	15J	11G	8X	View
Skagit	Power Equipment Operators-Underground Sewer & Water	Overhead, bridge type Crane: 20 tons through 44 tons	\$87.03	7A	11H	8X	View
Skagit	Power Equipment Operators-Underground Sewer & Water	Overhead, bridge type: 100 tons and over	\$88.67	7A	11H	8X	View
Skagit	Power Equipment Operators-Underground Sewer & Water	Overhead, bridge type: 45 tons through 99 tons	\$87.82	7A	11H	8X	View
Skagit	Power Equipment Operators-Underground Sewer & Water	Pavement Breaker	\$80.17	15J	11G	8X	View
Skagit	Power Equipment Operators-Underground Sewer & Water	Pile Driver (other Than Crane Mount)	\$84.48	15J	11G	8X	View

Skagit	Power Equipment Operators-Underground Sewer & Water	Plant Oiler - Asphalt, Crusher	\$83.83	15J	11G	8X	View
Skagit	Power Equipment Operators-Underground Sewer & Water	Posthole Digger, Mechanical	\$80.17	15J	11G	8X	View
Skagit	Power Equipment Operators-Underground Sewer & Water	Power Plant	\$80.17	15J	11G	8X	View
Skagit	Power Equipment Operators-Underground Sewer & Water	Pumps - Water	\$80.17	15J	11G	8X	View
Skagit	Power Equipment Operators-Underground Sewer & Water	Quad 9, Hd 41, D10 And Over	\$85.22	15J	11G	8X	View
Skagit	Power Equipment Operators-Underground Sewer & Water	Quick Tower: no cab, under 100 feet in height base to boom	\$84.48	15J	11G	8X	View
Skagit	Power Equipment Operators-Underground Sewer & Water	Remote Control Operator On Rubber Tired Earth Moving Equipment	\$85.22	15J	11G	8X	View
Skagit	Power Equipment Operators-Underground Sewer & Water	Rigger and Bellman	\$82.59	7A	11H	8X	View
Skagit	Power Equipment Operators-Underground Sewer & Water	Rigger/Signal Person, Bellman(Certified)	\$86.36	7A	11H	8X	View
Skagit	Power Equipment Operators-Underground Sewer & Water	Rollagon	\$85.22	15J	11G	8X	View
Skagit	Power Equipment Operators-Underground Sewer & Water	Roller, Other Than Plant Mix	\$80.17	15J	11G	8X	View
Skagit	Power Equipment Operators-Underground Sewer & Water	Roller, Plant Mix Or Multi-lift Materials	\$83.83	15J	11G	8X	View
Skagit	Power Equipment Operators-Underground Sewer & Water	Roto-mill, Roto-grinder	\$84.48	15J	11G	8X	View
Skagit	Power Equipment Operators-Underground Sewer & Water	Saws - Concrete	\$83.83	15J	11G	8X	View
Skagit	Power Equipment Operators-Underground Sewer & Water	Scraper, Self Propelled Under 45 Yards	\$84.48	15J	11G	8X	View
Skagit	Power Equipment Operators-Underground Sewer & Water	Scrapers - Concrete & Carry All	\$83.83	15J	11G	8X	View
Skagit	Power Equipment Operators-Underground Sewer & Water	Scrapers, Self-propelled: 45 Yards And Over	\$85.22	15J	11G	8X	View
Skagit	Power Equipment Operators-Underground Sewer & Water	Shotcrete/Gunite Equipment	\$80.17	15J	11G	8X	View
Skagit	Power Equipment Operators-Underground Sewer & Water	Shovel, Excavator, Backhoe, Tractors Under 15 Metric Tons	\$83.83	15J	11G	8X	View
Skagit	Power Equipment Operators-Underground Sewer & Water	Shovel, Excavator, Backhoe: Over 30 Metric Tons To 50 Metric Tons	\$85.22	15J	11G	8X	View
Skagit	Power Equipment Operators-Underground Sewer & Water	Shovel, Excavator, Backhoes, Tractors: 15 To 30 Metric Tons	\$84.48	15J	11G	8X	View
Skagit	Power Equipment Operators-Underground Sewer & Water	Shovel, Excavator, Backhoes: Over 50 Metric Tons To 90 Metric Tons	\$86.10	15J	11G	8X	View
Skagit	Power Equipment Operators-Underground Sewer & Water	Shovel, Excavator, Backhoes: Over 90 Metric Tons	\$86.96	15J	11G	8X	View
Skagit	Power Equipment Operators-Underground Sewer & Water	Slipform Pavers	\$85.22	15J	11G	8X	View
Skagit	Power Equipment Operators-Underground Sewer & Water	Spreader, Topsider & Screedman	\$85.22	15J	11G	8X	View
Skagit	Power Equipment Operators-Underground Sewer & Water	Subgrader Trimmer	\$84.48	15J	11G	8X	View
Skagit	Power Equipment Operators-Underground Sewer & Water	Tower Bucket Elevators	\$83.83	15J	11G	8X	View

Skagit	Power Equipment Operators-Underground Sewer & Water	Tower Crane: over 175' through 250' in height, base to boom	\$89.60	<u>7A</u>	<u>11H</u>	<u>8X</u>	View
Skagit	Power Equipment Operators-Underground Sewer & Water	Tower crane: up to 175' in height base to boom	\$88.67	<u>7A</u>	<u>11H</u>	<u>8X</u>	View
Skagit	Power Equipment Operators-Underground Sewer & Water	Tower Cranes: over 250' in height from base to boom	\$90.46	<u>7A</u>	<u>11H</u>	<u>8X</u>	View
Skagit	Power Equipment Operators-Underground Sewer & Water	Transporters, All Track Or Truck Type	\$85.22	<u>15J</u>	<u>11G</u>	<u>8X</u>	View
Skagit	Power Equipment Operators-Underground Sewer & Water	Trenching Machines	\$83.83	<u>15J</u>	<u>11G</u>	<u>8X</u>	View
Skagit	Power Equipment Operators-Underground Sewer & Water	Truck Crane Oiler/Driver: 100 tons and over	\$87.03	<u>7A</u>	<u>11H</u>	<u>8X</u>	View
Skagit	Power Equipment Operators-Underground Sewer & Water	Truck crane oiler/driver: under 100 tons	\$86.36	<u>7A</u>	<u>11H</u>	<u>8X</u>	View
Skagit	Power Equipment Operators-Underground Sewer & Water	Truck Mount Portable Conveyor	\$84.48	<u>15J</u>	<u>11G</u>	<u>8X</u>	View
Skagit	Power Equipment Operators-Underground Sewer & Water	Vac Truck (Vactor Guzzler, Hydro Excavator)	\$84.48	<u>15J</u>	<u>11G</u>	<u>8X</u>	View
Skagit	Power Equipment Operators-Underground Sewer & Water	Welder	\$85.22	<u>15J</u>	<u>11G</u>	<u>8X</u>	View
Skagit	Power Equipment Operators-Underground Sewer & Water	Wheel Tractors, Farmall Type	\$80.17	<u>15J</u>	<u>11G</u>	<u>8X</u>	View
Skagit	Power Equipment Operators-Underground Sewer & Water	Yo Yo Pay Dozer	\$84.48	<u>15J</u>	<u>11G</u>	<u>8X</u>	View
Skagit	Power Line Clearance Tree Trimmers	Journey Level In Charge	\$61.73	<u>5A</u>	<u>4A</u>		View
Skagit	Power Line Clearance Tree Trimmers	Spray Person	\$58.44	<u>5A</u>	<u>4A</u>		View
Skagit	Power Line Clearance Tree Trimmers	Tree Equipment Operator	\$61.73	<u>5A</u>	<u>4A</u>		View
Skagit	Power Line Clearance Tree Trimmers	Tree Trimmer	\$55.14	<u>5A</u>	<u>4A</u>		View
Skagit	Power Line Clearance Tree Trimmers	Tree Trimmer Groundperson	\$41.68	<u>5A</u>	<u>4A</u>		View
Skagit	Refrigeration & Air Conditioning Mechanics	Journey Level	\$90.96	<u>5A</u>	<u>1G</u>		View
Skagit	Residential Brick Mason	Journey Level	\$32.30		<u>1</u>		View
Skagit	Residential Carpenters	Journey Level	\$32.48		<u>1</u>		View
Skagit	Residential Cement Masons	Journey Level	\$20.67		<u>1</u>		View
Skagit	Residential Drywall Applicators	Journey Level	\$51.52	<u>15J</u>	<u>4C</u>		View
Skagit	Residential Drywall Tapers	Journey Level	\$34.10		<u>1</u>		View
Skagit	Residential Electricians	Journey Level	\$47.21	<u>7F</u>	<u>1D</u>		View
Skagit	Residential Glaziers	Journey Level	\$54.00	<u>7L</u>	<u>1H</u>		View
Skagit	Residential Insulation Applicators	Journey Level	\$23.91		<u>1</u>		View
Skagit	Residential Laborers	Journey Level	\$23.64		<u>1</u>		View
Skagit	Residential Marble Setters	Journey Level	\$32.30		<u>1</u>		View
Skagit	Residential Painters	Journey Level	\$24.50		<u>1</u>		View
Skagit	Residential Plumbers & Pipefitters	Journey Level	\$57.55	<u>5A</u>	<u>1G</u>		View
Skagit	Residential Refrigeration & Air Conditioning Mechanics	Journey Level	\$99.92	<u>7F</u>	<u>1E</u>		View
Skagit	Residential Sheet Metal Workers	Journey Level	\$24.60		<u>1</u>		View
Skagit	Residential Soft Floor Layers	Journey Level	\$30.31		<u>1</u>		View

Skagit	Residential Sprinkler Fitters (Fire Protection)	Journey Level	\$37.16		1		View
Skagit	Residential Stone Masons	Journey Level	\$32.30		1		View
Skagit	Residential Terrazzo Workers	Journey Level	\$32.30		1		View
Skagit	Residential Terrazzo/Tile Finishers	Journey Level	\$35.85		1		View
Skagit	Residential Tile Setters	Journey Level	\$32.30		1		View
Skagit	Roofers	Journey Level	\$64.45	5A	3H		View
Skagit	Roofers	Using Irritable Bituminous Materials	\$67.39	5A	3H		View
Skagit	Sheet Metal Workers	Journey Level (Field or Shop)	\$92.96	7F	1E		View
Skagit	Shipbuilding & Ship Repair	New Construction Boilermaker	\$58.93	7X	4J		View
Skagit	Shipbuilding & Ship Repair	New Construction Carpenter	\$51.85	7X	4J		View
Skagit	Shipbuilding & Ship Repair	New Construction Crane Operator	\$43.00	7V	1		View
Skagit	Shipbuilding & Ship Repair	New Construction Electrician	\$58.98	7X	4J		View
Skagit	Shipbuilding & Ship Repair	New Construction Heat & Frost Insulator	\$91.81	15H	11C		View
Skagit	Shipbuilding & Ship Repair	New Construction Laborer	\$58.60	7X	4J		View
Skagit	Shipbuilding & Ship Repair	New Construction Machinist	\$58.79	7X	4J		View
Skagit	Shipbuilding & Ship Repair	New Construction Operating Engineer	\$43.00	7V	1		View
Skagit	Shipbuilding & Ship Repair	New Construction Painter	\$58.72	7X	4J		View
Skagit	Shipbuilding & Ship Repair	New Construction Pipefitter	\$59.07	7X	4J		View
Skagit	Shipbuilding & Ship Repair	New Construction Rigger	\$58.93	7X	4J		View
Skagit	Shipbuilding & Ship Repair	New Construction Sheet Metal	\$58.68	7X	4J		View
Skagit	Shipbuilding & Ship Repair	New Construction Shipwright	\$51.85	7X	4J		View
Skagit	Shipbuilding & Ship Repair	New Construction Warehouse/Teamster	\$43.00	7V	1		View
Skagit	Shipbuilding & Ship Repair	New Construction Welder / Burner	\$58.93	7X	4J		View
Skagit	Shipbuilding & Ship Repair	Ship Repair Boilermaker	\$58.93	7X	4J		View
Skagit	Shipbuilding & Ship Repair	Ship Repair Carpenter	\$51.85	7X	4J		View
Skagit	Shipbuilding & Ship Repair	Ship Repair Crane Operator	\$45.06	7Y	4K		View
Skagit	Shipbuilding & Ship Repair	Ship Repair Electrician	\$58.98	7X	4J		View
Skagit	Shipbuilding & Ship Repair	Ship Repair Heat & Frost Insulator	\$91.81	15H	11C		View
Skagit	Shipbuilding & Ship Repair	Ship Repair Laborer	\$58.60	7X	4J		View
Skagit	Shipbuilding & Ship Repair	Ship Repair Machinist	\$58.79	7X	4J		View
Skagit	Shipbuilding & Ship Repair	Ship Repair Operating Engineer	\$45.06	7Y	4K		View
Skagit	Shipbuilding & Ship Repair	Ship Repair Painter	\$58.72	7X	4J		View
Skagit	Shipbuilding & Ship Repair	Ship Repair Pipefitter	\$59.07	7X	4J		View
Skagit	Shipbuilding & Ship Repair	Ship Repair Rigger	\$58.93	7X	4J		View
Skagit	Shipbuilding & Ship Repair	Ship Repair Sheet Metal	\$58.68	7X	4J		View
Skagit	Shipbuilding & Ship Repair	Ship Repair Shipwright	\$51.85	7X	4J		View
Skagit	Shipbuilding & Ship Repair	Ship Repair Warehouse / Teamster	\$45.06	7Y	4K		View
Skagit	Sign Makers & Installers (Electrical)	Journey Level	\$16.28		1		View
Skagit	Sign Makers & Installers (Non-Electrical)	Journey Level	\$16.28		1		View
Skagit	Soft Floor Layers	Journey Level	\$78.98	15J	4C		View
Skagit	Solar Controls For Windows	Journey Level	\$16.28		1		View
Skagit	Sprinkler Fitters (Fire Protection)	Journey Level	\$96.99	5C	1X		View
Skagit	Stage Rigging Mechanics (Non Structural)	Journey Level	\$16.28		1		View

Skagit	Stone Masons	Journey Level	\$71.82	<u>7E</u>	<u>1N</u>		View
Skagit	Street And Parking Lot Sweeper Workers	Journey Level	\$16.28		<u>1</u>		View
Skagit	Surveyors	Assistant Construction Site Surveyor	\$86.36	<u>7A</u>	<u>11H</u>	<u>8X</u>	View
Skagit	Surveyors	Chainman	\$82.59	<u>7A</u>	<u>11H</u>	<u>8X</u>	View
Skagit	Surveyors	Construction Site Surveyor	\$87.82	<u>7A</u>	<u>11H</u>	<u>8X</u>	View
Skagit	Surveyors	Drone Operator (when used in conjunction with survey work only)	\$82.59	<u>7A</u>	<u>11H</u>	<u>8X</u>	View
Skagit	Surveyors	Ground Penetrating Radar Operator	\$82.59	<u>7A</u>	<u>11H</u>	<u>8X</u>	View
Skagit	Telecommunication Technicians	Telecom Technician Journey Level	\$58.51	<u>5B</u>	<u>1B</u>		View
Skagit	Telephone Line Construction - Outside	Cable Splicer	\$41.35	<u>5A</u>	<u>2B</u>		View
Skagit	Telephone Line Construction - Outside	Hole Digger/Ground Person	\$27.31	<u>5A</u>	<u>2B</u>		View
Skagit	Telephone Line Construction - Outside	Telephone Equipment Operator (Light)	\$34.53	<u>5A</u>	<u>2B</u>		View
Skagit	Telephone Line Construction - Outside	Telephone Lineperson	\$39.07	<u>5A</u>	<u>2B</u>		View
Skagit	Terrazzo Workers	Journey Level	\$67.51	<u>7E</u>	<u>1N</u>		View
Skagit	Tile Setters	Journey Level	\$65.51	<u>7E</u>	<u>1N</u>		View
Skagit	Tile, Marble & Terrazzo Finishers	Finisher	\$56.34	<u>7E</u>	<u>1N</u>		View
Skagit	Traffic Control Stripers	Journey Level	\$92.44	<u>15L</u>	<u>1K</u>		View
Skagit	Truck Drivers	Asphalt Mix Over 16 Yards	\$78.65	<u>15J</u>	<u>11M</u>	<u>8L</u>	View
Skagit	Truck Drivers	Asphalt Mix To 16 Yards	\$77.81	<u>15J</u>	<u>11M</u>	<u>8L</u>	View
Skagit	Truck Drivers	Dump Truck	\$77.81	<u>15J</u>	<u>11M</u>	<u>8L</u>	View
Skagit	Truck Drivers	Dump Truck & Trailer	\$78.65	<u>15J</u>	<u>11M</u>	<u>8L</u>	View
Skagit	Truck Drivers	Other Trucks	\$78.65	<u>15J</u>	<u>11M</u>	<u>8L</u>	View
Skagit	Truck Drivers - Ready Mix	Transit Mix	\$78.65	<u>15J</u>	<u>11M</u>	<u>8L</u>	View
Skagit	Well Drillers & Irrigation Pump Installers	Irrigation Pump Installer	\$16.28		<u>1</u>		View
Skagit	Well Drillers & Irrigation Pump Installers	Oiler	\$16.28		<u>1</u>		View
Skagit	Well Drillers & Irrigation Pump Installers	Well Driller	\$16.28		<u>1</u>		View

Benefit Code Key – Effective 8/1/2024 thru 3/4/2025

Overtime Codes

Overtime calculations are based on the hourly rate actually paid to the worker. On public works projects, the hourly rate must be not less than the prevailing rate of wage minus the hourly rate of the cost of fringe benefits actually provided for the worker.

1. ALL HOURS WORKED IN EXCESS OF EIGHT (8) HOURS PER DAY OR FORTY (40) HOURS PER WEEK SHALL BE PAID AT ONE AND ONE-HALF TIMES THE HOURLY RATE OF WAGE.
 - B. All hours worked on Saturdays shall be paid at one and one-half times the hourly rate of wage. All hours worked on Sundays and holidays shall be paid at double the hourly rate of wage.
 - C. The first two (2) hours after eight (8) regular hours Monday through Friday and the first ten (10) hours on Saturday shall be paid at one and one-half times the hourly rate of wage. All other overtime hours and all hours worked on Sundays and holidays shall be paid at double the hourly rate of wage.
 - D. The first two (2) hours before or after a five-eight (8) hour workweek day or a four-ten (10) hour workweek day and the first eight (8) hours worked the next day after either workweek shall be paid at one and one-half times the hourly rate of wage. All additional hours worked and all worked on Sundays and holidays shall be paid at double the hourly rate of wage.
 - E. The first two (2) hours after eight (8) regular hours Monday through Friday and the first eight (8) hours on Saturday shall be paid at one and one-half times the hourly rate of wage. All other hours worked Monday through Saturday, and all hours worked on Sundays and holidays shall be paid at double the hourly rate of wage.
 - F. The first two (2) hours after eight (8) regular hours Monday through Friday and the first ten (10) hours on Saturday shall be paid at one and one-half times the hourly rate of wage. All other overtime hours worked, except Labor Day, shall be paid at double the hourly rate of wage. All hours worked on Labor Day shall be paid at three times the hourly rate of wage.
 - G. The first ten (10) hours worked on Saturdays and the first ten (10) hours worked on a fifth calendar weekday in a four-ten hour schedule, shall be paid at one and one-half times the hourly rate of wage. All hours worked in excess of ten (10) hours per day Monday through Saturday and all hours worked on Sundays and holidays shall be paid at double the hourly rate of wage.
 - H. All hours worked on Saturdays (except makeup days if work is lost due to inclement weather conditions or equipment breakdown) shall be paid at one and one-half times the hourly rate of wage. All hours worked Monday through Saturday over twelve (12) hours and all hours worked on Sundays and holidays shall be paid at double the hourly rate of wage.
 - I. All hours worked on Sundays and holidays shall also be paid at double the hourly rate of wage.
 - J. The first two (2) hours after eight (8) regular hours Monday through Friday and the first ten (10) hours on Saturday shall be paid at one and one-half times the hourly rate of wage. All hours worked over ten (10) hours Monday through Saturday, Sundays and holidays shall be paid at double the hourly rate of wage.
 - K. All hours worked on Saturdays and Sundays shall be paid at one and one-half times the hourly rate of wage. All hours worked on holidays shall be paid at double the hourly rate of wage.
 - M. All hours worked on Saturdays (except makeup days if work is lost due to inclement weather conditions) shall be paid at one and one-half times the hourly rate of wage. All hours worked on Sundays and holidays shall be paid at double the hourly rate of wage.

Overtime Codes Continued

- 1. N. All hours worked on Saturdays (except makeup days) shall be paid at one and one-half times the hourly rate of wage. All hours worked on Sundays and holidays shall be paid at double the hourly rate of wage.
- O. The first ten (10) hours worked on Saturday shall be paid at one and one-half times the hourly rate of wage. All hours worked on Sundays, holidays and after twelve (12) hours, Monday through Friday and after ten (10) hours on Saturday shall be paid at double the hourly rate of wage.
- P. All hours worked on Saturdays (except makeup days if circumstances warrant) and Sundays shall be paid at one and one-half times the hourly rate of wage. All hours worked on holidays shall be paid at double the hourly rate of wage.
- Q. The first two (2) hours after eight (8) regular hours Monday through Friday and up to ten (10) hours worked on Saturdays shall be paid at one and one-half times the hourly rate of wage. All hours worked in excess of ten (10) hours per day Monday through Saturday and all hours worked on Sundays and holidays (except Christmas day) shall be paid at double the hourly rate of wage. All hours worked on Christmas day shall be paid at two and one-half times the hourly rate of wage.
- R. All hours worked on Sundays and holidays shall be paid at two times the hourly rate of wage.
- U. All hours worked on Saturdays shall be paid at one and one-half times the hourly rate of wage. All hours worked on Sundays and holidays (except Labor Day) shall be paid at two times the hourly rate of wage. All hours worked on Labor Day shall be paid at three times the hourly rate of wage.
- V. All hours worked on Sundays and holidays (except Thanksgiving Day and Christmas day) shall be paid at one and one-half times the hourly rate of wage. All hours worked on Thanksgiving Day and Christmas day shall be paid at double the hourly rate of wage.
- W. All hours worked on Saturdays and Sundays (except make-up days due to conditions beyond the control of the employer) shall be paid at one and one-half times the hourly rate of wage. All hours worked on holidays shall be paid at double the hourly rate of wage.
- X. The first four (4) hours after eight (8) regular hours Monday through Friday and the first twelve (12) hours on Saturday shall be paid at one and one-half times the hourly rate of wage. All hours worked over twelve (12) hours Monday through Saturday, Sundays and holidays shall be paid at double the hourly rate of wage. When holiday falls on Saturday or Sunday, the day before Saturday, Friday, and the day after Sunday, Monday, shall be considered the holiday and all work performed shall be paid at double the hourly rate of wage.
- Y. All hours worked outside the hours of 5:00 am and 5:00 pm (or such other hours as may be agreed upon by any employer and the employee) and all hours worked in excess of eight (8) hours per day (10 hours per day for a 4 x 10 workweek) and on Saturdays and holidays (except labor day) shall be paid at one and one-half times the hourly rate of wage. (except for employees who are absent from work without prior approval on a scheduled workday during the workweek shall be paid at the straight-time rate until they have worked 8 hours in a day (10 in a 4 x 10 workweek) or 40 hours during that workweek.) All hours worked Monday through Saturday over twelve (12) hours and all hours worked on Sundays and Labor Day shall be paid at double the hourly rate of wage.
- Z. All hours worked on Saturdays and Sundays shall be paid at one and one-half times the hourly rate of wage. All hours worked on holidays shall be paid the straight time rate of pay in addition to holiday pay.

Overtime Codes Continued

2. ALL HOURS WORKED IN EXCESS OF EIGHT (8) HOURS PER DAY OR FORTY (40) HOURS PER WEEK SHALL BE PAID AT ONE AND ONE-HALF TIMES THE HOURLY RATE OF WAGE.
- B. All hours worked on holidays shall be paid at one and one-half times the hourly rate of wage.
 - F. The first eight (8) hours worked on holidays shall be paid at the straight hourly rate of wage in addition to the holiday pay. All hours worked in excess of eight (8) hours on holidays shall be paid at double the hourly rate of wage.
 - M. This code appears to be missing. All hours worked on Saturdays, Sundays and holidays shall be paid at double the hourly rate of wage.
 - R. All hours worked on Sundays and holidays and all hours worked over sixty (60) in one week shall be paid at double the hourly rate of wage.
 - U. All hours worked on Saturdays shall be paid at one and one-half times the hourly rate of wage. All hours worked over 12 hours in a day or on Sundays and holidays shall be paid at double the hourly rate of wage.
3. ALL HOURS WORKED IN EXCESS OF EIGHT (8) HOURS PER DAY OR FORTY (40) HOURS PER WEEK SHALL BE PAID AT ONE AND ONE-HALF TIMES THE HOURLY RATE OF WAGE.
- F. All hours worked on Saturday shall be paid at one and one-half times the hourly rate of wage. All hours worked on Sunday shall be paid at two times the hourly rate of wage. All hours worked on paid holidays shall be paid at two and one-half times the hourly rate of wage including holiday pay.
 - H. All work performed on Sundays between March 16th and October 14th and all Holidays shall be compensated for at two (2) times the regular rate of pay. Work performed on Sundays between October 15th and March 15th shall be compensated at one and one half (1-1/2) times the regular rate of pay.
 - J. All hours worked between the hours of 10:00 pm and 5:00 am, Monday through Friday, and all hours worked on Saturdays shall be paid at a one and one-half times the hourly rate of wage. All hours worked on Sundays and holidays shall be paid at double the hourly rate of wage.
 - K. Work performed in excess of eight (8) hours of straight time per day, or ten (10) hours of straight time per day when four ten (10) hour shifts are established, or forty (40) hours of straight time per week, Monday through Friday, or outside the normal 5 am to 6pm shift, and all work on Saturdays shall be paid at one and one-half times the hourly rate of wage. All work performed after 6:00 pm Saturday to 5:00 am Monday and Holidays, and all hours worked in excess of twelve (12) hours in a single shift shall be paid at double the hourly rate of wage.

After an employee has worked eight (8) hours at an applicable overtime rate, all additional hours shall be at the applicable overtime rate until such time as the employee has had a break of eight (8) hours or more. When an employee returns to work without at least eight (8) hours time off since their previous shift, all such time shall be a continuation of shift and paid at the applicable overtime rate until he/she shall have the eight (8) hours rest period.

Overtime Codes Continued

4. ALL HOURS WORKED IN EXCESS OF EIGHT (8) HOURS PER DAY OR FORTY (40) HOURS PER WEEK SHALL BE PAID AT ONE AND ONE-HALF TIMES THE HOURLY RATE OF WAGE.

- A. All hours worked in excess of eight (8) hours per day or forty (40) hours per week shall be paid at double the hourly rate of wage. All hours worked on Saturdays, Sundays and holidays shall be paid at double the hourly rate of wage
- C. On Monday through Friday, the first four (4) hours of overtime after eight (8) hours of straight time work shall be paid at one and one half (1-1/2) times the straight time rate of pay, unless a four (4) day ten (10) hour workweek has been established. On a four (4) day ten (10) hour workweek scheduled Monday through Thursday, or Tuesday through Friday, the first two (2) hours of overtime after ten (10) hours of straight time work shall be paid at one and one half (1-1/2) times the straight time rate of pay. On Saturday, the first twelve (12) hours of work shall be paid at one and one half (1-1/2) times the straight time rate of pay, except that if the job is down on Monday through Friday due to weather conditions or other conditions outside the control of the employer, the first ten (10) hours on Saturday may be worked at the straight time rate of pay. All hours worked over twelve (12) hours in a day and all hours worked on Sunday and Holidays shall be paid at two (2) times the straight time rate of pay.
- D. All hours worked in excess of eight (8) hours per day or forty (40) hours per week shall be paid at double the hourly rate of wage. All hours worked on Saturday, Sundays and holidays shall be paid at double the hourly rate of pay. Rates include all members of the assigned crew.

EXCEPTION:

On all multipole structures and steel transmission lines, switching stations, regulating, capacitor stations, generating plants, industrial plants, associated installations and substations, except those substations whose primary function is to feed a distribution system, will be paid overtime under the following rates:

The first two (2) hours after eight (8) regular hours Monday through Friday of overtime on a regular workday, shall be paid at one and one-half times the hourly rate of wage. All hours in excess of ten (10) hours will be at two (2) times the hourly rate of wage. The first eight (8) hours worked on Saturday will be paid at one and one-half (1-1/2) times the hourly rate of wage. All hours worked in excess of eight (8) hours on Saturday, and all hours worked on Sundays and holidays will be at the double the hourly rate of wage.

All overtime eligible hours performed on the above described work that is energized, shall be paid at the double the hourly rate of wage.

- E. The first two (2) hours after eight (8) regular hours Monday through Friday and the first eight (8) hours on Saturday shall be paid at one and one-half times the hourly rate of wage. All other hours worked Monday through Saturday, and all hours worked on Sundays and holidays shall be paid at double the hourly rate of wage.

On a four-day, ten-hour weekly schedule, either Monday thru Thursday or Tuesday thru Friday schedule, all hours worked after ten shall be paid at double the hourly rate of wage. The Monday or Friday not utilized in the normal four-day, ten hour work week, and Saturday shall be paid at one and one half (1½) times the regular shift rate for the first eight (8) hours. All other hours worked Monday through Saturday, and all hours worked on Sundays and holidays shall be paid at double the hourly rate of wage.
- G. All hours worked on Saturdays shall be paid at one and one-half times the hourly rate of wage. All hours worked Monday through Saturday over twelve (12) hours and all hours worked on Sundays and holidays shall be paid at double the hourly rate of wage.
- I. The First eight (8) hours worked on Saturdays shall be paid at one and one-half times the hourly rate of wage. All hours worked in excess of eight (8) per day on Saturdays shall be paid at double the hourly rate of wage. All hours worked on Sundays and holidays shall be paid at double the hourly rate of wage.

Overtime Codes Continued

4. J. The first eight (8) hours worked on a Saturday shall be paid at one and one-half times the hourly rate of wage. All hours worked in excess of eight (8) hours on a Saturday shall be paid at double the hourly rate of wage. All hours worked over twelve (12) in a day, and all hours worked on Sundays and Holidays shall be paid at double the hourly rate of wage.
- K. All hours worked on a Saturday shall be paid at one and one-half times the hourly rate of wage, so long as Saturday is the sixth consecutive day worked. All hours worked over twelve (12) in a day Monday through Saturday, and all hours worked on Sundays and Holidays shall be paid at double the hourly rate of wage.
- L. The first twelve (12) hours worked on a Saturday shall be paid at one and one-half times the hourly rate of wage. All hours worked on a Saturday in excess of twelve (12) hours shall be paid at double the hourly rate of pay. All hours worked over twelve (12) in a day Monday through Friday, and all hours worked on Sundays shall be paid at double the hourly rate of wage. All hours worked on a holiday shall be paid at one and one-half times the hourly rate of wage, except that all hours worked on Labor Day shall be paid at double the hourly rate of pay.
- S. On a four (4) day ten (10) hour workweek scheduled Monday through Thursday, or Tuesday through Friday, work performed in excess of (10) hours shall be paid at one and one half (1-1/2) times the hourly rate of pay. On Monday through Friday, work performed outside the normal work hours of 6:00 a.m. and 6:00 p.m. shall be paid at one and one-half (1-1/2) times the straight time rate, (except for special shifts or multiple shift operations).

All hours worked on Saturdays shall be paid at one and one-half times the hourly rate of wage. All work performed on Sundays and holidays shall be paid at double the hourly rate of wage. When an employee returns to work without at least eight (8) hours time off since their previous shift, all such time shall be a continuation of shift and paid at the applicable overtime rate until such time as the employee has had a break of eight (8) hours.

Multiple Shift Operations: When the first shift of a multiple shift (a two or three shift) operation is started at the basic straight time rate or at a specific overtime rate, all shifts of that day's operation shall be completed at that rate. Special Shifts: The Special Shift Premium is the basic hourly rate of pay plus \$2.00 an hour. When due to conditions beyond the control of the employer or when an owner (not acting as the contractor), a government agency or the contract specifications require more than four (4) hours of a special shift can only be performed outside the normal 6am to 6pm shift then the special shift premium will be applied to the basic straight time for the entire shift. When an employee works on a special shift, they shall be paid the special shift premium for each hour worked unless they are in overtime or double-time status. (For example, the special shift premium does not waive the overtime requirements for work performed on Saturday or Sunday).

- U. The first four (4) hours after eight (8) regular hours Monday through Friday and the first twelve (12) hours on Saturday shall be paid at one and one-half times the hourly rate of wage. (Except on makeup days if work is lost due to inclement weather, then the first eight (8) hours on Saturday may be paid the regular rate.) All hours worked over twelve (12) hours Monday through Saturday, and all hours worked on Sundays and holidays shall be paid at double the hourly rate of wage.

Overtime Codes Continued

4. X. All hours worked on Saturdays shall be paid at one and one-half times the hourly rate of wage. All hours worked on Sundays and holidays shall be paid at double the hourly rate of wage. Work performed outside the normal shift of 6 am to 6pm shall be paid at one and one-half the straight time rate, (except for special shifts or three shift operations). All work performed on Sundays and holidays shall be paid at double the hourly rate of wage. Shifts may be established when considered necessary by the Employer.

The Employer may establish shifts consisting of eight (8) or ten (10) hours of work (subject to WAC 296-127-022), that shall constitute a normal forty (40) hour work week. The Employer can change from a 5-eight to a 4-ten hour schedule or back to the other. All hours of work on these shifts shall be paid for at the straight time hourly rate. Work performed in excess of eight hours (or ten hours per day (subject to WAC 296-127-022) shall be paid at one and one-half the straight time rate.

When due to conditions beyond the control of the Employer, or when contract specifications require that work can only be performed outside the regular day shift, then by mutual agreement a special shift may be worked at the straight time rate, eight (8) hours work for eight (8) hours pay. The starting time shall be arranged to fit such conditions of work.

When an employee returns to work without at a break of eight (8) hours since their previous shift, all such time shall be a continuation of shift and paid at the applicable overtime rate until such time as the employee has had a break of eight (8) hours.

Overtime Codes Continued

11. ALL HOURS WORKED IN EXCESS OF EIGHT (8) HOURS PER DAY OR FORTY (40) HOURS PER WEEK SHALL BE PAID AT ONE AND ONE-HALF TIMES THE HOURLY RATE OF WAGE.

B After an employee has worked eight (8) hours, all additional hours worked shall be paid at the applicable overtime rate until such time as the employee has had a break of eight (8) hours or more.

C The first two (2) hours after eight (8) regular hours Monday through Friday and the first eight (8) hours on Saturday shall be paid at one and one-half times the hourly rate of wage. All other overtime hours worked, except Labor Day, and all hours on Sunday shall be paid at double the hourly rate of wage. All hours worked on Labor Day shall be paid at three times the hourly rate of wage. All non-overtime and non-holiday hours worked between 4:00 pm and 5:00 am, Monday through Friday, shall be paid at a premium rate of 15% over the hourly rate of wage.

D. All hours worked on Saturdays and holidays shall be paid at one and one-half times the hourly rate of wage. All hours worked on Sundays shall be paid at double the hourly rate of wage.

After an employee has worked eight (8) hours, all additional hours worked shall be paid at the applicable overtime rate until such time as the employee has had a break of eight (8) hours or more.

E. The first two (2) hours after eight (8) regular hours Monday through Friday, the first ten (10) hours on Saturday, and the first ten (10) hours worked on Holidays shall be paid at one and one-half times the hourly rate of wage. All hours worked over ten (10) hours Monday through Saturday, and Sundays shall be paid at double the hourly rate of wage.

After an employee has worked eight (8) hours, all additional hours worked shall be paid at the applicable overtime rate until such time as the employee has had a break of eight (8) hours or more.

Overtime Codes Continued

11. F. The first two (2) hours after eight (8) regular hours Monday through Friday and the first eight (8) hours on Saturday shall be paid at one and one-half times the hourly rate of wage. All other hours worked Monday through Saturday, and all hours worked on Sundays and holidays shall be paid at double the hourly rate of wage.

On a four-day, ten-hour weekly schedule, either Monday thru Thursday or Tuesday thru Friday schedule, all hours worked after ten shall be paid at double the hourly rate of wage. The Monday or Friday not utilized in the normal four-day, ten hour work week, and Saturday shall be paid at one-half times the hourly rate of wage for the first eight (8) hours. All other hours worked Monday through Saturday, and all hours worked on Sundays and holidays shall be paid at double the hourly rate of wage.

- G. Work performed in excess of eight (8) hours of straight time per day, or ten (10) hours of straight time per day when four ten (10) hour shifts are established, or forty (40) hours of straight time per week, Monday through Friday, or outside the normal 5 am to 6pm shift, and all work on Saturdays shall be paid at one and one-half times the hourly rate of wage.

All work performed after 6:00 pm Saturday to 5:00 am Monday and Holidays, and all hours worked in excess of twelve (12) hours in a single shift shall be paid at double the hourly rate of wage.

After an employee has worked eight (8) hours at an applicable overtime rate, all additional hours shall be at the applicable overtime rate until such time as the employee has had a break of nine (9) hours or more. When an employee returns to work without at least nine (9) hours time off since their previous shift, all such time shall be a continuation of shift and paid at the applicable overtime rate until he/she shall have the nine (9) hours rest period.

- H. Work performed in excess of eight (8) hours of straight time per day, or ten (10) hours of straight time per day when four ten (10) hour shifts are established, or forty (40) hours of straight time per week, Monday through Friday, or outside the normal 5 am to 6pm shift, and all work on Saturdays shall be paid at one and one-half times the hourly rate of wage.

All work performed after 6:00 pm Saturday to 5:00 am Monday and Holidays, and all hours worked in excess of twelve (12) hours in a single shift shall be paid at double the hourly rate of wage.

After an employee has worked eight (8) hours at an applicable overtime rate, all additional hours shall be at the applicable overtime rate until such time as the employee has had a break of ten (10) hours or more. When an employee returns to work without at least ten (10) hours time off since their previous shift, all such time shall be a continuation of shift and paid at the applicable overtime rate until he/she shall have the ten (10) hours rest period.

- J. All hours worked on holidays shall be paid at double the hourly rate of wage.

- K. On Monday through Friday hours worked outside 4:00 am and 5:00 pm, and the first two (2) hours after eight (8) hours worked shall be paid at one and one-half times the hourly rate. All hours worked over 10 hours per day Monday through Friday, and all hours worked on Saturdays, Sundays, and Holidays worked shall be paid at double the hourly rate of wage.

- L. An employee working outside 5:00 am and 5:00 pm shall receive an additional two dollar (\$2.00) per hour for all hours worked that shift. All hours worked on holidays shall be paid at one and one-half times the hourly rate of wage. All hours worked on holidays shall be paid at one and one-half times the hourly rate of wage.

Overtime Codes Continued

11. M. On Monday through Friday, the first four (4) hours of overtime after eight (8) hours of straight time work shall be paid at one and one half (1-1/2) times the straight time rate of pay, unless a four (4) day ten (10) hour workweek has been established. On a four (4) day ten (10) hour workweek scheduled Monday through Thursday, or Tuesday through Friday, the first two (2) hours of overtime after ten (10) hours of straight time work shall be paid at one and one half (1-1/2) times the straight time rate of pay.
- Work performed outside the normal work hours of 5:00 a.m. and 6:00 p.m. shall be paid at one and one-half (1-1/2) times the straight time rate, (except for special shifts or multiple shift operations). When the first shift of a multiple shift (a two or three shift) operation is started at the basic straight time rate or at a specific overtime rate, all shifts of that day's operation shall be completed at that rate. When due to conditions beyond the control of the Employer or when contract specifications require that work can only be performed outside the regular day shift of 5:00 am to 6:00 pm, then a special shift may be worked at the straight time rate, plus the shift pay premium when applicable. The starting time of work will be arranged to fit such conditions of work. Such shift shall consist of eight (8) hours work for eight (8) hours pay or ten (10) hours work for ten (10) hours pay for four ten shifts.
- On Saturday, the first twelve (12) hours of work shall be paid at one and one half (1-1/2) times the straight time rate of pay. All work performed after 6:00 pm Saturday to 5:00 am Monday, all work performed over twelve (12) hours, and all work performed on holidays shall be paid at double the straight time rate of pay.
- Shift Pay Premium: In an addition to any overtime already required, all hours worked between the hours of 6:00 pm and 5:00 am shall receive an additional two dollars (\$2.00) per hour.
- N. All work performed over twelve hours in a shift and all work performed on Sundays and Holidays shall be paid at double the straight time rate.
- Any time worked over eight (8) hours on Saturday shall be paid double the straight time rate, except employees assigned to work six 10-hour shifts per week shall be paid double the straight time rate for any time worked on Saturday over 10 hours.
- O. All work performed on Saturdays, Sundays, and Holidays shall be paid at one and one half (1-1/2) times the straight time rate of pay.

Overtime Codes Continued

11. P. Work performed in excess of ten (10) hours of straight time per day when four ten (10) hour shifts are established and all work on Saturdays, except for make-up days shall be paid at time and one-half (1 ½) the straight time rate.
- Work performed outside the normal work hours of 5:00 a.m. and 6:00 p.m. shall be paid at one and one-half (1-1/2) times the straight time rate, (except for special shifts or multiple shift operations). When the first shift of multiple shift (a two or three shift) operation is started at the basic straight time rate or at a specific overtime rate, all shifts of that day's operation shall be completed at that rate. When due to conditions beyond the control of the Employer or when contract specifications require that work can only be performed outside the regular day shift of 5:00 a.m. to 6:00 p.m., then a special shift may be worked at the straight time rate, plus the shift pay premium when applicable. The starting time of work will be arranged to fit such conditions of work. Such shifts shall consist of eight (8) hours work for eight (8) hours pay or ten (10) hours work for ten (10) hours pay for four ten-hour shifts.
- In the event the job is down due to weather conditions, then Saturday may, be worked as a voluntary make-up day at the straight time rate. However, Saturday shall not be utilized as a make-up day when a holiday falls on Friday. All work performed on Sundays and holidays and work in excess of twelve (12) hours per day shall be paid at double (2x) the straight time rate of pay.
- After an employee has worked eight (8) hours at an applicable overtime rate, all additional hours shall be at the applicable overtime rate until such time as the employee has had a break of eight (8) hours.
- When an employee returns to work without a break of eight (8) hours since their previous shift, all such time shall be a continuation of shift and paid at the applicable overtime rate until such time as the employee has had a break of eight (8) hours.
- Q. All hours worked between the hours of 6:00 pm and 6:00 am, Monday through Saturday, shall be paid at a premium rate of 35% over the hourly rate of wage. Work performed on Sundays shall be paid at double time. All hours worked on holidays shall be paid at double the hourly rate of wage.
- R. On Monday through Saturday hours worked outside 6:00 am and 7:00 pm, and all hours after eight (8) hours worked shall be paid at one and one-half times the hourly rate. All hours worked on Sundays and Holidays shall be paid at double the hourly rate of wage.
- When a holiday falls on a Saturday, the Friday before shall be the observed holiday. When a holiday falls on a Sunday, the following Monday shall be the observed holiday.
- S. The first ten (10) hours worked on Saturdays shall be paid at one and one-half times the hourly rate of wage. In the event the job is down due to weather conditions, or other conditions beyond the control of the Employer, then Saturday may be worked at the straight time rate, for the first eight (8) hours, or the first ten (10) hours when a four day ten hour workweek has been established.
- All hours worked Monday through Saturday over twelve (12) hours and all hours worked on Sundays and holidays shall be paid at double the hourly rate of wage.
- When an employee returns to work without a break of eight (8) hours since their previous shift, all such time shall be a continuation of shift and paid at the applicable overtime rate until such time as the employee has had a break of eight (8) hours.

Benefit Code Key – Effective 8/1/2024 thru 3/4/2025

11. T. On Monday through Friday, the first four (4) hours of overtime after eight (8) hours of straight time work shall be paid at one and one half (1-1/2) times the straight time rate of pay, unless a four (4) day ten (10) hour workweek has been established. On a four (4) day ten (10) hour workweek scheduled Monday through Thursday, or Tuesday through Friday, the first two (2) hours of overtime after ten (10) hours of straight time work shall be paid at one and one half (1-1/2) times the straight time rate of pay.

On Saturday, the first twelve (12) hours of work shall be paid at one and one half (1-1/2) times the straight time rate of pay, except that if the job is down on Monday through Friday due to weather conditions or other conditions outside the control of the employer, the first ten (10) hours on Saturday may be worked at the straight time rate of pay.

All hours worked over twelve (12) hours in a day and all hours worked on Sunday and Holidays shall be paid at two (2) times the straight time rate of pay.

- U. On Monday through Friday, the first four (4) hours of overtime after eight (8) hours of straight time work shall be paid at one and one half (1-1/2) times the straight time rate of pay, unless a four (4) day ten (10) hour workweek has been established. On a four (4) day ten (10) hour workweek scheduled Monday through Thursday, or Tuesday through Friday, the first two (2) hours of overtime after ten (10) hours of straight time work shall be paid at one and one half (1-1/2) times the straight time rate of pay.

On Saturday, the first twelve (12) hours of work shall be paid at one and one half (1-1/2) times the straight time rate of pay, except that if the job is down on Monday through Friday due to weather conditions or other conditions outside the control of the employer, the first ten (10) hours on Saturday may be worked at the straight time rate of pay.

All hours worked over twelve (12) hours in a day and all hours worked on Sunday and Holidays shall be paid at two (2) times the straight time rate of pay.

If, due to conditions beyond the control of the Employer or when contract specifications require that work can only be performed outside the regular day shift, then a Special Shift may be worked, Monday through Friday, at the straight-time rate. The starting time of work for the Special Shift will be arranged to fit such conditions of work. Such Special Shift shall consist of eight (8) hours of work for eight (8) hours of pay or ten (10) hours of work for ten(10) hours of pay on a four-ten workday schedule.

Holiday Codes

5. A. Holidays: New Year's Day, Memorial Day, Independence Day, Labor Day, Thanksgiving Day, Friday after Thanksgiving Day, and Christmas Day (7).
- B. Holidays: New Year's Day, Memorial Day, Independence Day, Labor Day, Thanksgiving Day, Friday after Thanksgiving Day, the day before Christmas, and Christmas Day (8).
- C. Holidays: New Year's Day, Presidents' Day, Memorial Day, Independence Day, Labor Day, Thanksgiving Day, the Friday after Thanksgiving Day, And Christmas Day (8).
- D. Holidays: New Year's Day, Memorial Day, Independence Day, Labor Day, Thanksgiving Day, the Friday and Saturday after Thanksgiving Day, And Christmas Day (8).
- H. Holidays: New Year's Day, Memorial Day, Independence Day, Thanksgiving Day, the Day after Thanksgiving Day, And Christmas (6).

Holiday Codes Continued

- 5. I. Holidays: New Year's Day, Memorial Day, Independence Day, Labor Day, Thanksgiving Day, and Christmas Day (6).
- K. Holidays: New Year's Day, Presidents' Day, Memorial Day, Independence Day, Labor Day, Thanksgiving Day, Friday After Thanksgiving Day, The Day Before Christmas, And Christmas Day (9).
- L. Holidays: New Year's Day, Martin Luther King Jr. Day, Memorial Day, Independence Day, Labor Day, Thanksgiving Day, Friday after Thanksgiving Day, And Christmas Day (8).
- N. Holidays: New Year's Day, Presidents' Day, Memorial Day, Independence Day, Labor Day, Veterans' Day, Thanksgiving Day, The Friday After Thanksgiving Day, And Christmas Day (9).
- P. Holidays: New Year's Day, Memorial Day, Independence Day, Labor Day, Thanksgiving Day, Friday And Saturday After Thanksgiving Day, The Day Before Christmas, And Christmas Day (9). If A Holiday Falls On Sunday, The Following Monday Shall Be Considered As A Holiday.
- Q. Paid Holidays: New Year's Day, Memorial Day, Independence Day, Labor Day, Thanksgiving Day, and Christmas Day (6).
- R. Paid Holidays: New Year's Day, Memorial Day, Independence Day, Labor Day, Thanksgiving Day, Day After Thanksgiving Day, One-Half Day Before Christmas Day, And Christmas Day. (7 1/2).
- S. Paid Holidays: New Year's Day, Presidents' Day, Memorial Day, Independence Day, Labor Day, Thanksgiving Day, And Christmas Day (7).
- Z. Holidays: New Year's Day, Memorial Day, Independence Day, Labor Day, Veterans Day, Thanksgiving Day, the Friday after Thanksgiving Day, And Christmas Day (8).

Holiday Codes Continued

- 6. G. Paid Holidays: New Year's Day, Martin Luther King Jr. Day, Presidents' Day, Memorial Day, Independence Day, Labor Day, Veterans' Day, Thanksgiving Day, the Friday after Thanksgiving Day, Christmas Day, and Christmas Eve Day (11).
- H. Paid Holidays: New Year's Day, New Year's Eve Day, Memorial Day, Independence Day, Labor Day, Thanksgiving Day, Friday After Thanksgiving Day, Christmas Day, The Day After Christmas, And A Floating Holiday (10).
- T. Paid Holidays: New Year's Day, Presidents' Day, Memorial Day, Independence Day, Labor Day, Thanksgiving Day, The Friday After Thanksgiving Day, The Last Working Day Before Christmas Day, And Christmas Day (9).
- Z. Holidays: New Year's Day, Memorial Day, Independence Day, Labor Day, Thanksgiving Day, Friday after Thanksgiving Day, And Christmas Day (7). If a holiday falls on Saturday, the preceding Friday shall be considered as the holiday. If a holiday falls on Sunday, the following Monday shall be considered as the holiday.

Holiday Codes Continued

- 7. A. Holidays: New Year's Day, Memorial Day, Independence Day, Labor Day, Thanksgiving Day, the Friday and Saturday after Thanksgiving Day, And Christmas Day (8). Any Holiday Which Falls On A Sunday Shall Be Observed As A Holiday On The Following Monday. If any of the listed holidays falls on a Saturday, the preceding Friday shall be a regular work day.
- B. Holidays: New Year's Day, Memorial Day, Independence Day, Labor Day, Thanksgiving Day, the Friday and Saturday after Thanksgiving Day, And Christmas Day (8). Any holiday which falls on a Sunday shall be observed as a holiday on the following Monday. Any holiday which falls on a Saturday shall be observed as a holiday on the preceding Friday.
- C. Holidays: New Year's Day, Martin Luther King Jr. Day, Memorial Day, Independence Day, Labor Day, Thanksgiving Day, the Friday after Thanksgiving Day, And Christmas Day (8). Any holiday which falls on a Sunday shall be observed as a holiday on the following Monday. Any holiday which falls on a Saturday shall be observed as a holiday on the preceding Friday.
- D. Paid Holidays: New Year's Day, Memorial Day, Independence Day, Labor Day, Veteran's Day, Thanksgiving Day, the Friday after Thanksgiving Day, And Christmas Day (8). Unpaid Holidays: President's Day. Any paid holiday which falls on a Sunday shall be observed as a holiday on the following Monday. Any paid holiday which falls on a Saturday shall be observed as a holiday on the preceding Friday.
- E. Holidays: New Year's Day, Memorial Day, Independence Day, Labor Day, Thanksgiving Day, the Friday after Thanksgiving Day, And Christmas Day (7). Any holiday which falls on a Sunday shall be observed as a holiday on the following Monday. Any holiday which falls on a Saturday shall be observed as a holiday on the preceding Friday.
- F. Holidays: New Year's Day, Memorial Day, Independence Day, Labor Day, Thanksgiving Day, the Friday after Thanksgiving Day, the last working day before Christmas day and Christmas day (8). Any holiday which falls on a Sunday shall be observed as a holiday on the following Monday. Any holiday which falls on a Saturday shall be observed as a holiday on the preceding Friday.

Holiday Codes Continued

- 7. G. Holidays: New Year's Day, Memorial Day, Independence Day, Labor Day, Thanksgiving Day, and Christmas Day (6). Any holiday which falls on a Sunday shall be observed as a holiday on the following Monday.
- H. Holidays: New Year's Day, Martin Luther King Jr. Day, Independence Day, Memorial Day, Labor Day, Thanksgiving Day, the Friday after Thanksgiving Day, the Last Working Day before Christmas Day and Christmas Day (9). Any holiday which falls on a Sunday shall be observed as a holiday on the following Monday. Any holiday which falls on a Saturday shall be observed as a holiday on the preceding Friday.
- I. Holidays: New Year's Day, President's Day, Independence Day, Memorial Day, Labor Day, Thanksgiving Day, The Friday After Thanksgiving Day, The Day Before Christmas Day And Christmas Day (9). Any holiday which falls on a Sunday shall be observed as a holiday on the following Monday. Any holiday which falls on a Saturday shall be observed as a holiday on the preceding Friday.
- J. Holidays: New Year's Day, Independence Day, Memorial Day, Labor Day, Thanksgiving Day and Christmas Day (6). Any holiday which falls on a Sunday shall be observed as a holiday on the following Monday. Any holiday which falls on a Saturday shall be observed as a holiday on the preceding Friday.

Holiday Codes Continued

7. K. Holidays: New Year's Day, Memorial Day, Independence Day, Thanksgiving Day, the Friday and Saturday after Thanksgiving Day, And Christmas Day (8). Any holiday which falls on a Sunday shall be observed as a holiday on the following Monday. Any holiday which falls on a Saturday shall be observed as a holiday on the preceding Friday.
- L. Holidays: New Year's Day, Memorial Day, Labor Day, Independence Day, Thanksgiving Day, the Last Work Day before Christmas Day, And Christmas Day (7). Any holiday which falls on a Sunday shall be observed as a holiday on the following Monday. Any holiday which falls on a Saturday shall be observed as a holiday on the preceding Friday.
- N. Holidays: New Year's Day, Memorial Day, Independence Day, Labor Day, Thanksgiving Day, the Friday after Thanksgiving Day, And Christmas Day (7). Any holiday which falls on a Sunday shall be observed as a holiday on the following Monday. When Christmas falls on a Saturday, the preceding Friday shall be observed as a holiday.
- P. Holidays: New Year's Day, Memorial Day, Independence Day, Labor Day, Thanksgiving Day, Friday after Thanksgiving Day, And Christmas Day (7). Any holiday which falls on a Sunday shall be observed as a holiday on the following Monday.
- Q. Holidays: New Year's Day, Memorial Day, Independence Day, Labor Day, Thanksgiving Day, the Friday after Thanksgiving Day, the Last Working Day before Christmas Day and Christmas Day (8). Any holiday which falls on a Sunday shall be observed as a holiday on the following Monday. If any of the listed holidays falls on a Saturday, the preceding Friday shall be a regular work day.
- S. Paid Holidays: New Year's Day, Memorial Day, Independence Day, Labor Day, Thanksgiving Day, Friday after Thanksgiving Day, Christmas Day, the Day after Christmas, and A Floating Holiday (9). If any of the listed holidays falls on a Sunday, the day observed by the Nation shall be considered a holiday and compensated accordingly.
- V. Holidays: New Year's Day, President's Birthday, Memorial Day, Independence Day, Labor Day, Thanksgiving Day, the Friday after Thanksgiving Day, Christmas Day, the day before or after Christmas, and the day before or after New Year's Day. If any of the above listed holidays falls on a Sunday, the day observed by the Nation shall be considered a holiday and compensated accordingly.
- W. Holidays: New Year's Day, Day After New Year's, Memorial Day, Independence Day, Labor Day, Thanksgiving Day, the Friday after Thanksgiving Day, Christmas Eve Day, Christmas Day, the day after Christmas, the day before New Year's Day, and a Floating Holiday.
- X. Holidays: New Year's Day, Day before or after New Year's Day, Presidents' Day, Memorial Day, Independence Day, Labor Day, Thanksgiving Day, the Friday after Thanksgiving Day, Christmas Day, and the day before or after Christmas day. If a holiday falls on a Saturday or on a Friday that is the normal day off, then the holiday will be taken on the last normal workday. If the holiday falls on a Monday that is the normal day off or on a Sunday, then the holiday will be taken on the next normal workday.
- Y. Holidays: New Year's Day, Presidents' Day, Memorial Day, Independence Day, Labor Day, Thanksgiving Day, the Friday after Thanksgiving Day, and Christmas Day. (8) If the holiday falls on a Sunday, then the day observed by the federal government shall be considered a holiday and compensated accordingly.
- Z. Holidays: New Year's Day, Memorial Day, Independence Day, Labor Day, Thanksgiving Day, the Friday and Saturday after Thanksgiving Day, Christmas Eve, and Christmas Day (9). Any holiday which falls on a Saturday shall be observed as a holiday on the preceding Friday. Any holiday which falls on a Sunday shall be observed as a holiday on the following Monday.

Holiday Codes Continued

15. G. New Year's Day, Washington's Birthday, Memorial Day, Independence Day, Labor Day, Thanksgiving Day, The Friday After Thanksgiving Day, the last scheduled workday before Christmas, and Christmas Day (9). If any of the listed holidays falls on a Sunday, the day observed by the Nation shall be considered a holiday and compensated accordingly.
- H. Holidays: New Year's Day, Martin Luther King Jr. Day, Independence Day, Memorial Day, Labor Day, Thanksgiving Day, the Friday after Thanksgiving Day, the Last Working Day before Christmas Day and Christmas Day (9). Any holiday which falls on a Sunday shall be observed as a holiday on the following Monday. Any holiday which falls on a Saturday shall be observed as a holiday on the preceding Friday.
- I. Holidays: New Year's Day, President's Day, Independence Day, Memorial Day, Labor Day, Thanksgiving Day, The Friday After Thanksgiving Day, The Day Before Christmas Day And Christmas Day (9). Any holiday which falls on a Sunday shall be observed as a holiday on the following Monday. Any holiday which falls on a Saturday shall be observed as a holiday on the preceding Friday.
- J. Holidays: New Year's Day, Martin Luther King Jr. Day, Memorial Day, Independence Day, Labor Day, Thanksgiving Day, the Friday and Saturday after Thanksgiving Day, and Christmas Day (9). Any holiday which falls on a Sunday shall be observed as a holiday on the following Monday. If any of the listed holidays falls on a Saturday, the preceding Friday shall be a regular work day.
- K. Holidays: New Year's Day, Memorial Day, Independence Day, Thanksgiving Day, the Friday and Saturday after Thanksgiving Day, And Christmas Day (8). Any holiday which falls on a Sunday shall be observed as a holiday on the following Monday. Any holiday which falls on a Saturday shall be observed as a holiday on the preceding Friday.
- L. Holidays: New Year's Day, Memorial Day, Independence Day, Labor Day, Veteran's Day, Thanksgiving Day, the Friday after Thanksgiving Day, and Christmas Day (8). Any holiday which falls on a Sunday shall be observed as a holiday on the following Monday. If any of the listed holidays falls on a Saturday, the preceding Friday shall be a regular work day.
- M. Holidays: New Year's Day, Martin Luther King Jr. Day, Independence Day, Memorial Day, Labor Day, Thanksgiving Day, the Friday after Thanksgiving Day, Christmas Eve Day and Christmas Day (9). Any holiday which falls on a Sunday shall be observed as a holiday on the following Monday. If any of the listed holidays falls on a Saturday, the preceding Friday shall be a regular work day.
- N. Holidays: New Year's Day, Memorial Day, Independence Day, Labor Day, Veteran's Day, Thanksgiving Day, the Friday after Thanksgiving Day, and Christmas Day (8). Any holiday which falls on a Sunday shall be observed as a holiday on the following Monday.
- O. Holidays: New Year's Day, Martin Luther King Jr. Day, Memorial Day, Independence Day, Labor Day, Thanksgiving Day, the Friday and Saturday after Thanksgiving Day, the day before Christmas day, and Christmas Day (10). Any holiday which falls on a Sunday shall be observed as a holiday on the following Monday.

Benefit Code Key – Effective 8/1/2024 thru 3/4/2025

Note Codes

8. D. Workers working with supplied air on hazmat projects receive an additional \$1.00 per hour.
- L. Workers on hazmat projects receive additional hourly premiums as follows -Level A: \$0.75, Level B: \$0.50, And Level C: \$0.25.
- M. Workers on hazmat projects receive additional hourly premiums as follows: Levels A & B: \$1.00, Levels C & D: \$0.50.
- N. Workers on hazmat projects receive additional hourly premiums as follows -Level A: \$1.00, Level B: \$0.75, Level C: \$0.50, And Level D: \$0.25.
- S. Effective August 31, 2012 – A Traffic Control Supervisor shall be present on the project whenever flagging or spotting or other traffic control labor is being utilized. Flaggers and Spotters shall be posted where shown on approved Traffic Control Plans or where directed by the Engineer. All flaggers and spotters shall possess a current flagging card issued by the State of Washington, Oregon, Montana, or Idaho. This classification is only effective on or after August 31, 2012.
- T. Effective August 31, 2012 – A Traffic Control Laborer performs the setup, maintenance and removal of all temporary traffic control devices and construction signs necessary to control vehicular, bicycle, and pedestrian traffic during construction operations. Flaggers and Spotters shall be posted where shown on approved Traffic Control Plans or where directed by the Engineer. All flaggers and spotters shall possess a current flagging card issued by the State of Washington, Oregon, Montana, or Idaho. This classification is only effective on or after August 31, 2012.
- U. Workers on hazmat projects receive additional hourly premiums as follows – Class A Suit: \$2.00, Class B Suit: \$1.50, And Class C Suit: \$1.00. Workers performing underground work receive an additional \$0.40 per hour for any and all work performed underground, including operating, servicing and repairing of equipment. The premium for underground work shall be paid for the entire shift worked. Workers who work suspended by a rope or cable receive an additional \$0.50 per hour. The premium for work suspended shall be paid for the entire shift worked. Workers who do “pioneer” work (break open a cut, build road, etc.) more than one hundred fifty (150) feet above grade elevation receive an additional \$0.50 per hour.
8. V. In addition to the hourly wage and fringe benefits, the following depth and enclosure premiums shall be paid. The premiums are to be calculated for the maximum depth and distance into an enclosure that a diver reaches in a day. The premiums are to be paid one time for the day and are not used in calculating overtime pay.
- Depth premiums apply to depths of fifty feet or more. Over 50' to 100' - \$2.00 per foot for each foot over 50 feet. Over 101' to 150' - \$3.00 per foot for each foot over 101 feet. Over 151' to 220' - \$4.00 per foot for each foot over 220 feet. Over 221' - \$5.00 per foot for each foot over 221 feet.
- Enclosure premiums apply when divers enter enclosures (such as pipes or tunnels) where there is no vertical ascent and is measured by the distance travelled from the entrance. 25' to 300' - \$1.00 per foot from entrance. 300' to 600' - \$1.50 per foot beginning at 300'. Over 600' - \$2.00 per foot beginning at 600'.
- W. Meter Installers work on single phase 120/240V self-contained residential meters. The Lineman/Groundmen rates would apply to meters not fitting this description.

Note Codes Continued

- X. Workers on hazmat projects receive additional hourly premiums as follows - Class A Suit: \$2.00, Class B Suit: \$1.50, Class C Suit: \$1.00, and Class D Suit: \$0.50. Special Shift Premium: Basic hourly rate plus \$2.00 per hour.

When due to conditions beyond the control of the Employer or when an owner (not acting as the contractor), a government agency or the contract specifications requires that work can only be performed outside the normal 5 am to 6pm shift, then the special shift premium will be applied to the basic hourly rate. When an employee works on a special shift, they shall be paid a special shift premium for each hour worked unless they are in OT or Double-time status. (For example, the special shift premium does not waive the overtime requirements for work performed on Saturday or Sunday.)

- Y. Tide Work: When employees are called out between the hours of 6:00 p.m. and 6:00 a.m. to work on tide work (work located in the tide plane) all time worked shall be at one and one-half times the hourly rate of pay.

Swinging Stage/Boatswains Chair: Employees working on a swinging state or boatswains chair or under conditions that require them to be tied off to allow their hands to be free shall receive seventy-five cents (\$0.75) per hour above the classification rate.

- Z. Workers working with supplied air on hazmat projects receive an additional \$1.00 per hour.

Special Shift Premium: Basic hourly rate plus \$2.00 per hour. When due to conditions beyond the control of the Employer or when an owner (not acting as a contractor), a government agency or the contract specifications require that more than (4) hours of a special shift can only be performed outside the normal 6 am to 6pm shift, then the special shift premium will be applied to the basic straight time for the entire shift. When an employee works on a special shift, they will be paid a special shift premium for each hour worked unless they are in overtime or double-time status. (For example, the special shift premium does not waive the overtime requirements for work performed on Saturday or Sunday.)

Note Codes Continued

9. A. Workers working with supplied air on hazmat projects receive an additional \$1.00 per hour.

Special Shift Premium: Basic hourly rate plus \$2.00 per hour. When due to conditions beyond the control of the Employer or when an owner (not acting as the contractor), a government agency or the contract specifications require that more than four (4) hours of a special shift can only be performed outside the normal 6 am to 6pm shift, then the special shift premium will be applied to the basic straight time for the entire shift. When an employee works on a special shift, they shall be paid a special shift premium for each hour worked unless they are in overtime or double-time status. (For example, the special shift premium does not waive the overtime requirements for work performed on Saturday or Sunday.)

Certified Crane Operator Premium: Crane operators requiring certifications shall be paid \$0.50 per hour above their classification rate.

Boom Pay Premium: All cranes including tower shall be paid as follows based on boom length:

- (A) – 130’ to 199’ – \$0.50 per hour over their classification rate.
- (B) – 200’ to 299’ – \$0.80 per hour over their classification rate.
- (C) – 300’ and over – \$1.00 per hour over their classification rate.

Note Codes Continued

9. B. The highest pressure registered on the gauge for an accumulated time of more than fifteen (15) minutes during the shift shall be used in determining the scale paid.

Tide Work: When employees are called out between the hours of 6:00 p.m. and 6:00 a.m. to work on tide work (work located in the tide plane) all time worked shall be at one and one-half times the hourly rate of pay. Swinging Stage/Boatswains Chair: Employees working on a swinging stage or boatswains chair or under conditions that require them to be tied off to allow their hands to be free shall receive seventy-five cents (\$0.75) per hour above the classification rate.

- C. Tide Work: When employees are called out between the hours of 6:00 p.m. and 6:00 a.m. to work on tide work (work located in the tide plane) all time worked shall be at one and one-half times the hourly rate of pay. Swinging Stage/Boatswains Chair: Employees working on a swinging stage or boatswains chair or under conditions that require them to be tied off to allow their hands to be free shall receive seventy-five cents (\$0.75) per hour above the classification rate.

Effective August 31, 2012 – A Traffic Control Supervisor shall be present on the project whenever flagging or spotting or other traffic control labor is being utilized. A Traffic Control Laborer performs the setup, maintenance and removal of all temporary traffic control devices and construction signs necessary to control vehicular, bicycle, and pedestrian traffic during construction operations. Flaggers and Spotters shall be posted where shown on approved Traffic Control Plans or where directed by the Engineer. All flaggers and spotters shall possess a current flagging card issued by the State of Washington, Oregon, Montana, or Idaho. These classifications are only effective on or after August 31, 2012.

- D. Industrial Painter wages are required for painting within industrial facilities such as treatment plants, pipelines, towers, dams, bridges, power generation facilities and manufacturing facilities such as chemical plants, etc., or anywhere abrasive blasting is necessary to prepare surfaces, or hazardous materials encapsulation is required.
- E. Heavy Construction includes construction, repair, alteration or additions to the production, fabrication or manufacturing portions of industrial or manufacturing plants, hydroelectric or nuclear power plants and atomic reactor construction. Workers on hazmat projects receive additional hourly premiums as follows -Level A: \$1.00, Level B: \$0.75, Level C: \$0.50, And Level D: \$0.25.
- F. Industrial Painter wages are required for painting within industrial facilities such as treatment plants, pipelines, towers, dams, power generation facilities and manufacturing facilities such as chemical plants, etc., or anywhere abrasive blasting is necessary to prepare surfaces, or hazardous materials encapsulation is required.
- H. One (1) person crew shall consist of a Party Chief. (Total Station or similar one (1) person survey system). Two (2) person survey party shall consist of a least a Party Chief and a Chain Person. Three (3) person survey party shall consist of at least a Party Chief, an Instrument Person, and a Chain Person.

Benefit Code Key – Effective 8/1/2024 thru 3/4/2025

9. I. In addition to the hourly wage and fringe benefits, the following depth and enclosure premiums shall be paid. The premiums are to be calculated for the maximum depth and distance into an enclosure that a diver reaches in a day. The premiums are to be paid one time for the day and are not used in calculating overtime pay.

Depth premiums apply to depths of fifty feet or more. Over 50' to 100' - \$2.00 per foot for each foot over 50 feet. Over 101' to 150' - \$3.00 per foot for each foot over 101 feet. Over 151' to 220' - \$4.00 per foot for each foot over 220 feet. Over 221' - \$5.00 per foot for each foot over 221 feet.

Enclosure premiums apply when divers enter enclosures (such as pipes or tunnels) where there is no vertical ascent and is measured by the distance travelled from the entrance. 25' to 300' - \$1.00 per foot from entrance. 300' to 600' - \$1.50 per foot beginning at 300'. Over 600' - \$2.00 per foot beginning at 600'.

Employees may be required to perform any combination of work within the Diving team/crew, (with the exception of dive Supervisor) provided they are paid at the highest rate at which he/she has worked for the shift.

- L. Workers on hazmat projects receive additional hourly premiums as follows -Level A: \$0.75, Level B: \$0.50, And Level C: \$0.25.

Tide Work: When employees are called out between the hours of 6:00 p.m. and 6:00 a.m. to work on tide work (work located in the tide plane) all time worked shall be at one and one-half times the hourly rate of pay.

Swinging Stage/Boatswains Chair: Employees working on a swinging stage or boatswains chair or under conditions that require them to be tied off to allow their hands to be free shall receive seventy-five cents (\$0.75) per hour above the classification rate.

**Washington State Department of Labor and Industries
Policy Statement
(Regarding the Production of "Standard" or "Non-standard" Items)**

Below is the department's (State L&I's) list of criteria to be used in determining whether a prefabricated item is "standard" or "non-standard". For items not appearing on WSDOT's predetermined list, these criteria shall be used by the Contractor (and the Contractor's subcontractors, agents to subcontractors, suppliers, manufacturers, and fabricators) to determine coverage under RCW 39.12. The production, in the State of Washington, of non-standard items is covered by RCW 39.12, and the production of standard items is not. The production of any item outside the State of Washington is not covered by RCW 39.12.

1. Is the item fabricated for a public works project? If not, it is not subject to RCW 39.12. If it is, go to question 2.
2. Is the item fabricated on the public works jobsite? If it is, the work is covered under RCW 39.12. If not, go to question 3.
3. Is the item fabricated in an assembly/fabrication plant set up for, and dedicated primarily to, the public works project? If it is, the work is covered by RCW 39.12. If not, go to question 4.
4. Does the item require any assembly, cutting, modification or other fabrication by the supplier? If not, the work is not covered by RCW 39.12. If yes, go to question 5.
5. Is the prefabricated item intended for the public works project typically an inventory item which could reasonably be sold on the general market? If not, the work is covered by RCW 39.12. If yes, go to question 6.
6. Does the specific prefabricated item, generally defined as standard, have any unusual characteristics such as shape, type of material, strength requirements, finish, etc? If yes, the work is covered under RCW 39.12.

Any firm with questions regarding the policy, WSDOT's Predetermined List, or for determinations of covered and non-covered workers shall be directed to State L&I at (360) 902-5330.

**WSDOT's
Predetermined List for
Suppliers - Manufactures - Fabricator**

Below is a list of potentially prefabricated items, originally furnished by WSDOT to Washington State Department of Labor and Industries, that may be considered non-standard and therefore covered by the prevailing wage law, RCW 39.12. Items marked with an X in the "YES" column should be considered to be non-standard and therefore covered by RCW 39.12. Items marked with an X in the "NO" column should be considered to be standard and therefore not covered. Of course, exceptions to this general list may occur, and in that case shall be evaluated according to the criteria described in State and L&I's policy statement.

ITEM DESCRIPTION	YES	NO
1. Metal rectangular frames, solid metal covers, herringbone grates, and bi-directional vaned grates for Catch Basin Types 1, 1L, 1P, and 2 and Concrete Inlets. See Std. Plans		X
2. Metal circular frames (rings) and covers, circular grates, and prefabricated ladders for Manhole Types 1, 2, and 3, Drywell Types 1, 2, and 3 and Catch Basin Type 2. See Std. Plans		X
3. Prefabricated steel grate supports and welded grates, metal frames and dual vaned grates, and Type 1, 2, and 3 structural tubing grates for Drop Inlets. See Std. Plans.		X
4. Concrete Pipe - Plain Concrete pipe and reinforced concrete pipe Class 2 to 5 sizes smaller than 60 inch diameter.		X
5. Concrete Pipe - Plain Concrete pipe and reinforced concrete pipe Class 2 to 5 sizes larger than 60 inch diameter.		X
6. Corrugated Steel Pipe - Steel lock seam corrugated pipe for culverts and storm sewers, sizes 30 inch to 120 inches in diameter. May also be treated, 1 thru 5.		X
7. Corrugated Aluminum Pipe - Aluminum lock seam corrugated pipe for culverts and storm sewers, sizes 30 inch to 120 inches in diameter. May also be treated, #5.		X

ITEM DESCRIPTION	YES	NO
8. Anchor Bolts & Nuts - Anchor Bolts and Nuts, for mounting sign structures, luminaries and other items, shall be made from commercial bolt stock. See Contract Plans and Std. Plans for size and material type.		X
9. Aluminum Pedestrian Handrail - Pedestrian handrail conforming to the type and material specifications set forth in the contract plans. Welding of aluminum shall be in accordance with Section 9-28.14(3).	X	
10. Major Structural Steel Fabrication - Fabrication of major steel items such as trusses, beams, girders, etc., for bridges.	X	
11. Minor Structural Steel Fabrication - Fabrication of minor steel Items such as special hangers, brackets, access doors for structures, access ladders for irrigation boxes, bridge expansion joint systems, etc., involving welding, cutting, punching and/or boring of holes. See Contact Plans for item description and shop drawings.	X	
12. Aluminum Bridge Railing Type BP - Metal bridge railing conforming to the type and material specifications set forth in the Contract Plans. Welding of aluminum shall be in accordance with Section 9-28.14(3).		X
13. Concrete Piling--Precast-Prestressed concrete piling for use as 55 and 70 ton concrete piling. Concrete to conform to Section 9-19.1 of Std. Spec..	X	
14. Precast Manhole Types 1, 2, and 3 with cones, adjustment sections and flat top slabs. See Std. Plans.		X
15. Precast Drywell Types 1, 2, and with cones and adjustment Sections. See Std. Plans.		X
16. Precast Catch Basin - Catch Basin type 1, 1L, 1P, and 2 With adjustment sections. See Std. Plans.		X

ITEM DESCRIPTION	YES	NO
17. Precast Concrete Inlet - with adjustment sections, See Std. Plans		X
18. Precast Drop Inlet Type 1 and 2 with metal grate supports. See Std. Plans.		X
19. Precast Grate Inlet Type 2 with extension and top units. See Std. Plans		X
20. Metal frames, vaned grates, and hoods for Combination Inlets. See Std. Plans		X
21. Precast Concrete Utility Vaults - Precast Concrete utility vaults of various sizes. Used for in ground storage of utility facilities and controls. See Contract Plans for size and construction requirements. Shop drawings are to be provided for approval prior to casting		X
22. Vault Risers - For use with Valve Vaults and Utilities X Vaults.		X
23. Valve Vault - For use with underground utilities. See Contract Plans for details.		X
24. Precast Concrete Barrier - Precast Concrete Barrier for use as new barrier or may also be used as Temporary Concrete Barrier. Only new state approved barrier may be used as permanent barrier.		X
25. Reinforced Earth Wall Panels – Reinforced Earth Wall Panels in size and shape as shown in the Plans. Fabrication plant has annual approval for methods and materials to be used. See Shop Drawing. Fabrication at other locations may be approved, after facilities inspection, contact HQ. Lab.	X	
26. Precast Concrete Walls - Precast Concrete Walls - tilt-up wall panel in size and shape as shown in Plans. Fabrication plant has annual approval for methods and materials to be used	X	

ITEM DESCRIPTION	YES	NO
27. Precast Railroad Crossings - Concrete Crossing Structure Slabs.	X	
28. 12, 18 and 26 inch Standard Precast Prestressed Girder – Standard Precast Prestressed Girder for use in structures. Fabricator plant has annual approval of methods and materials to be used. Shop Drawing to be provided for approval prior to casting girders. See Std. Spec. Section 6-02.3(25)A	X	
29. Prestressed Concrete Girder Series 4-14 - Prestressed Concrete Girders for use in structures. Fabricator plant has annual approval of methods and materials to be used. Shop Drawing to be provided for approval prior to casting girders. See Std. Spec. Section 6-02.3(25)A	X	
30. Prestressed Tri-Beam Girder - Prestressed Tri-Beam Girders for use in structures. Fabricator plant has annual approval of methods and materials to be used. Shop Drawing to be provided for approval prior to casting girders. See Std. Spec. Section 6-02.3(25)A	X	
31. Prestressed Precast Hollow-Core Slab – Precast Prestressed Hollow-core slab for use in structures. Fabricator plant has annual approval of methods and materials to be used. Shop Drawing to be provided for approval prior to casting girders. See Std. Spec. Section 6-02.3(25)A.	X	
32. Prestressed-Bulb Tee Girder - Bulb Tee Prestressed Girder for use in structures. Fabricator plant has annual approval of methods and materials to be used. Shop Drawing to be provided for approval prior to casting girders. See Std. Spec. Section 6-02.3(25)A	X	
33. Monument Case and Cover See Std. Plan.		X

ITEM DESCRIPTION	YES	NO
34. Cantilever Sign Structure - Cantilever Sign Structure fabricated from steel tubing meeting AASHTO-M-183. See Std. Plans, and Contract Plans for details. The steel structure shall be galvanized after fabrication in accordance with AASHTO-M-111.	X	
35. Mono-tube Sign Structures - Mono-tube Sign Bridge fabricated to details shown in the Plans. Shop drawings for approval are required prior to fabrication.	X	
36. Steel Sign Bridges - Steel Sign Bridges fabricated from steel tubing meeting AASHTO-M-138 for Aluminum Alloys. See Std. Plans, and Contract Plans for details. The steel structure shall be galvanized after fabrication in accordance with AASHTO-M-111.	X	
37. Steel Sign Post - Fabricated Steel Sign Posts as detailed in Std Plans. Shop drawings for approval are to be provided prior to fabrication		X
38. Light Standard-Prestressed - Spun, prestressed, hollow concrete poles.	X	
39. Light Standards - Lighting Standards for use on highway illumination systems, poles to be fabricated to conform with methods and materials as specified on Std. Plans. See Special Provisions for pre-approved drawings.	X	
40. Traffic Signal Standards - Traffic Signal Standards for use on highway and/or street signal systems. Standards to be fabricated to conform with methods and material as specified on Std. Plans. See Special Provisions for pre-approved drawings	X	
41. Precast Concrete Sloped Mountable Curb (Single and DualFaced) See Std. Plans.		X

ITEM DESCRIPTION	YES	NO
42. Traffic Signs - Prior to approval of a Fabricator of Traffic Signs, the sources of the following materials must be submitted and approved for reflective sheeting, legend material, and aluminum sheeting. NOTE: *** Fabrication inspection required. Only signs tagged "Fabrication Approved" by WSDOT Sign Fabrication Inspector to be installed	X	X
	Custom Message	Std Signing Message
43. Cutting & bending reinforcing steel		X
44. Guardrail components	X	X
	Custom End Sec	Standard Sec
45. Aggregates/Concrete mixes	Covered by WAC 296-127-018	
46. Asphalt	Covered by WAC 296-127-018	
47. Fiber fabrics		X
48. Electrical wiring/components		X
49. treated or untreated timber pile		X
50. Girder pads (elastomeric bearing)	X	
51. Standard Dimension lumber		X
52. Irrigation components		X

ITEM DESCRIPTION	YES	NO
53. Fencing materials		X
54. Guide Posts		X
55. Traffic Buttons		X
56. Epoxy		X
57. Cribbing		X
58. Water distribution materials		X
59. Steel "H" piles		X
60. Steel pipe for concrete pile casings		X
61. Steel pile tips, standard		X
62. Steel pile tips, custom	X	

Prefabricated items specifically produced for public works projects that are prefabricated in a county other than the county wherein the public works project is to be completed, the wage for the offsite prefabrication shall be the applicable prevailing wage for the county in which the actual prefabrication takes place.

It is the manufacturer of the prefabricated product to verify that the correct county wage rates are applied to work they perform.

See RCW [39.12.010](#)

(The definition of "locality" in RCW [39.12.010](#)(2) contains the phrase "wherein the physical work is being performed." The department interprets this phrase to mean the actual work site.

WSDOT's List of State Occupations not applicable to Heavy and Highway Construction Projects

This project is subject to the state hourly minimum rates for wages and fringe benefits in the contract provisions, as provided by the state Department of Labor and Industries.

The following list of occupations, is comprised of those occupations that are not normally used in the construction of heavy and highway projects.

When considering job classifications for use and / or payment when bidding on, or building heavy and highway construction projects for, or administered by WSDOT, these Occupations will be excepted from the included "Washington State Prevailing Wage Rates For Public Work Contracts" documents.

- Building Service Employees
- Electrical Fixture Maintenance Workers
- Electricians - Motor Shop
- Heating Equipment Mechanics
- Industrial Engine and Machine Mechanics
- Industrial Power Vacuum Cleaners
- Inspection, Cleaning, Sealing of Water Systems by Remote Control
- Laborers - Underground Sewer & Water
- Machinists (Hydroelectric Site Work)
- Modular Buildings
- Playground & Park Equipment Installers
- Power Equipment Operators - Underground Sewer & Water
- Residential *** ALL ASSOCIATED RATES ***
- Sign Makers and Installers (Non-Electrical)
- Sign Makers and Installers (Electrical)
- Stage Rigging Mechanics (Non Structural)

The following occupations may be used only as outlined in the preceding text concerning "WSDOT's list for Suppliers - Manufacturers - Fabricators"

- Fabricated Precast Concrete Products
- Metal Fabrication (In Shop)

Definitions for the Scope of Work for prevailing wages may be found at the Washington State Department of Labor and Industries web site and in WAC Chapter 296-127.

Washington State Department of Labor and Industries
Policy Statements
(Regarding Production and Delivery of Gravel, Concrete, Asphalt, etc.)

WAC 296-127-018 Agency filings affecting this section

Coverage and exemptions of workers involved in the production and delivery of gravel, concrete, asphalt, or similar materials.

(1) The materials covered under this section include but are not limited to: Sand, gravel, crushed rock, concrete, asphalt, or other similar materials.

(2) All workers, regardless of by whom employed, are subject to the provisions of chapter 39.12 RCW when they perform any or all of the following functions:

(a) They deliver or discharge any of the above-listed materials to a public works project site:

(i) At one or more point(s) directly upon the location where the material will be incorporated into the project; or

(ii) At multiple points at the project; or

(iii) Adjacent to the location and coordinated with the incorporation of those materials.

(b) They wait at or near a public works project site to perform any tasks subject to this section of the rule.

(c) They remove any materials from a public works construction site pursuant to contract requirements or specifications (e.g., excavated materials, materials from demolished structures, clean-up materials, etc.).

(d) They work in a materials production facility (e.g., batch plant, borrow pit, rock quarry, etc.) which is established for a public works project for the specific, but not necessarily exclusive, purpose of supplying materials for the project.

(e) They deliver concrete to a public works site regardless of the method of incorporation.

(f) They assist or participate in the incorporation of any materials into the public works project.

(3) All travel time that relates to the work covered under subsection (2) of this section requires the payment of prevailing wages. Travel time includes time spent waiting to load, loading, transporting, waiting to unload, and delivering materials. Travel time would include all time spent in travel in support of a public works project whether the vehicle is empty or full. For example, travel time spent returning to a supply source to obtain another load of material for use on a public works site or returning to the public works site to obtain another load of excavated material is time spent in travel that is subject to prevailing wage. Travel to a supply source, including travel from a public works site, to obtain materials for use on a private project would not be travel subject to the prevailing wage.

(4) Workers are not subject to the provisions of chapter 39.12 RCW when they deliver materials to a stockpile.

(a) A "stockpile" is defined as materials delivered to a pile located away from the site of incorporation such that the stockpiled materials must be physically moved from the stockpile and transported to another location on the project site in order to be incorporated into the project.

(b) A stockpile does not include any of the functions described in subsection (2)(a) through (f) of this section; nor does a stockpile include materials delivered or distributed to multiple locations upon the project site; nor does a stockpile include materials dumped at the place of incorporation, or adjacent to the location and coordinated with the incorporation.

(5) The applicable prevailing wage rate shall be determined by the locality in which the work is performed. Workers subject to subsection (2)(d) of this section, who produce such materials at an off-site facility shall be paid the applicable prevailing wage rates for the county in which the off-site facility is located. Workers subject to subsection (2) of this section, who deliver such materials to a public works project site shall be paid the applicable prevailing wage rates for the county in which the public works project is located.

[Statutory Authority: Chapter 39.12 RCW, RCW 43.22.051 and 43.22.270. 08-24-101, § 296-127-018, filed 12/2/08, effective 1/2/09. Statutory Authority: Chapters 39.04 and 39.12 RCW and RCW 43.22.270. 92-01-104 and 92-08-101, § 296-127-018, filed 12/18/91 and 4/1/92, effective 8/31/92.]

APPENDIX B

Contract and Contract Bond- Informational Only

VENDOR SERVICES AGREEMENT

Skagit County, through the Department of Public Works (hereinafter referred to as County) and _____ (hereinafter referred to as Contractor), for and in consideration of the mutual benefits do hereby agree as follows:

1. Contractor will provide the following service/products at such time and in such manner as described in "**Exhibit A**".
2. County will compensate Contractor a maximum of _____, chargeable to GL expenditure code(s) # _____, and others as may be necessary.
3. The parties agree that Contractor is an independent contractor, and not an employee nor agent of Skagit County. Contractor hereby agrees not to make any representations to any third party, nor to allow such third party to remain under the misimpression that Contractor is an employee of Skagit County. All payments made hereunder and all services performed shall be made and performed pursuant to this Agreement by the Contractor as an independent contractor. Contractor will defend, indemnify and hold harmless the County, its officers, agents or employees from any loss or expense, including but not limited to settlements, judgments, setoffs, attorneys' fees or costs incurred by reason of claims or demands because of breach of the provisions of this paragraph. Further the Contractor represents that all employees and sub-contractors are covered under Industrial Insurance in compliance with R.C.W. Title 51.
4. **Defense & Indemnity Agreement:**
The Contractor agrees to defend, indemnify and save harmless the County, its appointed and elective officers and employees, from and against all loss or expense, including but not limited to judgments, settlements, attorney's fees and costs by reason of any and all claims and demands upon the County, its elected or appointed officials or employees for damages because of personal or bodily injury, including death at any time resulting therefrom, sustained by any person or persons and on account of damage to property including loss of use thereof, whether such injury to persons or damage to property is due to the negligence of the Contractor, its subcontractors, its elected officers, employees or their agents, except only such injury or damage as shall have been occasioned by the sole negligence of the County, its appointed or elected officials or employees. It is further provided that no liability shall attach to the County by reason of entering into this contract, except as expressly provided herein.
5. This Contract shall commence on the date of mutual execution and continue until either party terminates by giving 30 days' notice in writing either personally delivered or mailed postage prepaid by certified mail, return receipt requested to the party's last known address, but in no event shall the contract continue for more than one year from date of execution.
6. The Contractor shall not assign any interest in this Contract and shall not transfer any

interest in same without prior written County consent.

7. The Contractor will secure, at his own expense, all personnel required in performing said services under this Contract. Contractor shall be personally liable for applicable payroll, labor and industries premiums and all applicable taxes and shall hold County harmless therefrom.

8. The Contractor shall provide proof of insurance for general comprehensive liability in the amount of \$1,000,000 to cover Contractor's activities during the term of this Contract. Proof of insurance shall be in a form acceptable and approved by the County. A certificate of insurance naming the County, its elected officials, and employees as additional insured's and naming the County as a certificate holder shall accompany this Contract for signing. Thirty (30) days' written notice to the County of cancellation of the insurance policy is required. No contract shall form until and unless a copy of the certificate of insurance, in the amount required, is attached hereto as set forth in "**Exhibit "B"**". The contractors insurance shall be primary. Any insurance or self-insurance maintained by the County, its officers, officials, employees or volunteers shall be excess of Contractors insurance and shall not contribute to it.

9. Prevailing Wages:

Contractor and subcontractor shall submit a "Statement of Intent to Pay Prevailing Wages" prior to submitting first application for payment. Each statement of intent to pay prevailing wages must be approved by the Industrial Statistician of the Department of Labor and Industries before it is submitted to the County. Unless otherwise authorized by the Department of Labor and Industries, each voucher claim submitted by a Contractor for payment on a project estimate shall state that the prevailing wages have been paid in accordance with the pre-filed statement or statements of Intent to Pay Prevailing Wages on file with the public agency.

10. Termination for Public Convenience:

The County may terminate the contract in whole or in part whenever the County determines, in its sole discretion that such termination is in the best interests of the County. Whenever the contract is terminated in accordance with this paragraph, the Contractor shall be entitled to payment for actual work performed at unit contract prices for completed items of work. An equitable adjustment in the contract price for partially completed items of work will be made, but such adjustment shall not include provision for loss of anticipated profit on deleted or uncompleted work. Termination of this contract by the County at any time during the term, whether for default or convenience, shall not constitute a breach of contract by the County. If sufficient funds are not appropriated or allocated for payment under this contract for any future fiscal period, the County will not be obligated to make payments for services or amounts incurred after the end of the current fiscal period. No penalty or expense shall accrue to the County in the event this provision applies.

CONTRACTOR:

Signature & Title of Signatory
(Date _____)

Print Name

Title

Mailing Address:

Telephone No. _____

Fed. Tax ID # _____

Contractor Lic. #. _____

INFORMATIONAL ONLY

DATED this ____ day of _____, 2024.

**BOARD OF COUNTY COMMISSIONERS
SKAGIT COUNTY, WASHINGTON**

Peter Browning, Chair

Lisa Janicki, Commissioner

Attest:

Ron Wesen, Commissioner

Clerk of the Board

For contracts under \$5,000:
Authorization per Resolution R20030146

Recommended:

County Administrator

Department Head

Approved as to form:

Civil Deputy Prosecuting Attorney

Approved as to indemnification:

Risk Manager

Approved as to budget:

Budget & Finance Director

EXHIBIT "A"

SCOPE OF SERVICES

INFORMATIONAL ONLY

EXHIBIT "B"

PROOF OF INSURANCE

The Contractor shall provide proof of insurance for Commercial General Liability or Professional Liability in the amount of \$1,000,000.00 to cover Contractor's activities during the term of this Contract. Proof of insurance shall be in a form acceptable and approved by the County. Contractors insurance shall be primary.

The type of insurance required by this Agreement is marked below.

- X 1) Commercial General Liability Insurance
Certificate Holder – Skagit County
**The Certificate must name the County as additional insured:
Skagit County, its elected officials, officers and employees
are named as additional insured.**
Thirty (30) days written notice to the County of cancellation
of the insurance policy.
- 2) Professional Liability
Certificate Holder – Skagit County
Thirty (30) days written notice to the County of cancellation
of the insurance policy

NOTE: No contract shall form until and unless a copy of the Certificate of Insurance, properly completed and in the amount required, is attached hereto.

- 3) Insurance is waived

Date: _____
Risk Manager

CONTRACT BOND

KNOW ALL MEN BY THESE PRESENTS, that Skagit County, a Municipal Corporation of Washington, has awarded _____ of _____, as Principal, and _____ as Surety, are jointly and severally held and bound unto the County of Skagit in the penal sum of _____ (\$ _____), dollars, for the payment of which we jointly and severely bind ourselves, our heirs, executors, administrators, and assigns, and successors and assigns, firmly by these presents.

THE CONDITION of this bond is such that whereas, on the _____ day of _____ A.D., 2024, the said Principal, herein, executed a certain contract with the County of Skagit by the items, conditions and provisions of which contract the said _____ Principal, herein agree to furnish all material and do certain work, to wit: That _____ will undertake and complete the construction of _____

PURCHASE & ASSEMBLY OF (QTY 3) MARINE DIESEL ENGINE PACKAGES FOR THE VEHICLE & PASSENGER FERRY M/V GUEMES PROJECT #FE8-60

according to the maps, plans and specifications made a part of said contract, which contract as so executed, is hereunto attached, is now referred to and by reference is incorporated herein and made a part hereof as fully for all purposes as if here set forth at length. The bond shall cover all approved change orders as if they were in the original contract.

NOW, THEREFORE, if the Principal herein shall faithfully and truly observe and comply with the terms, conditions and provisions of said contract in all respects and shall well and truly and fully do and perform all matters and things by _____ (principal) undertaken to be performed under said contract, upon the terms proposed therein, and within the time prescribed therein, and until the same is accepted, and shall pay all laborers, mechanics, subcontractors and material men, and all persons who shall supply such contractor or subcontractor with provisions and supplies for the carrying on of such work, and shall in all respects faithfully perform said contract according to law, then this obligation to be void, otherwise to remain in full force and effect.

WITNESS our hands this _____ day of _____, 2024.

(Principal)

Attorney-in-Fact, Surety

Name and Address
Local Office of Agent

APPROVED AS TO FORM
RICH WEYRICH
Skagit County Prosecuting Attorney

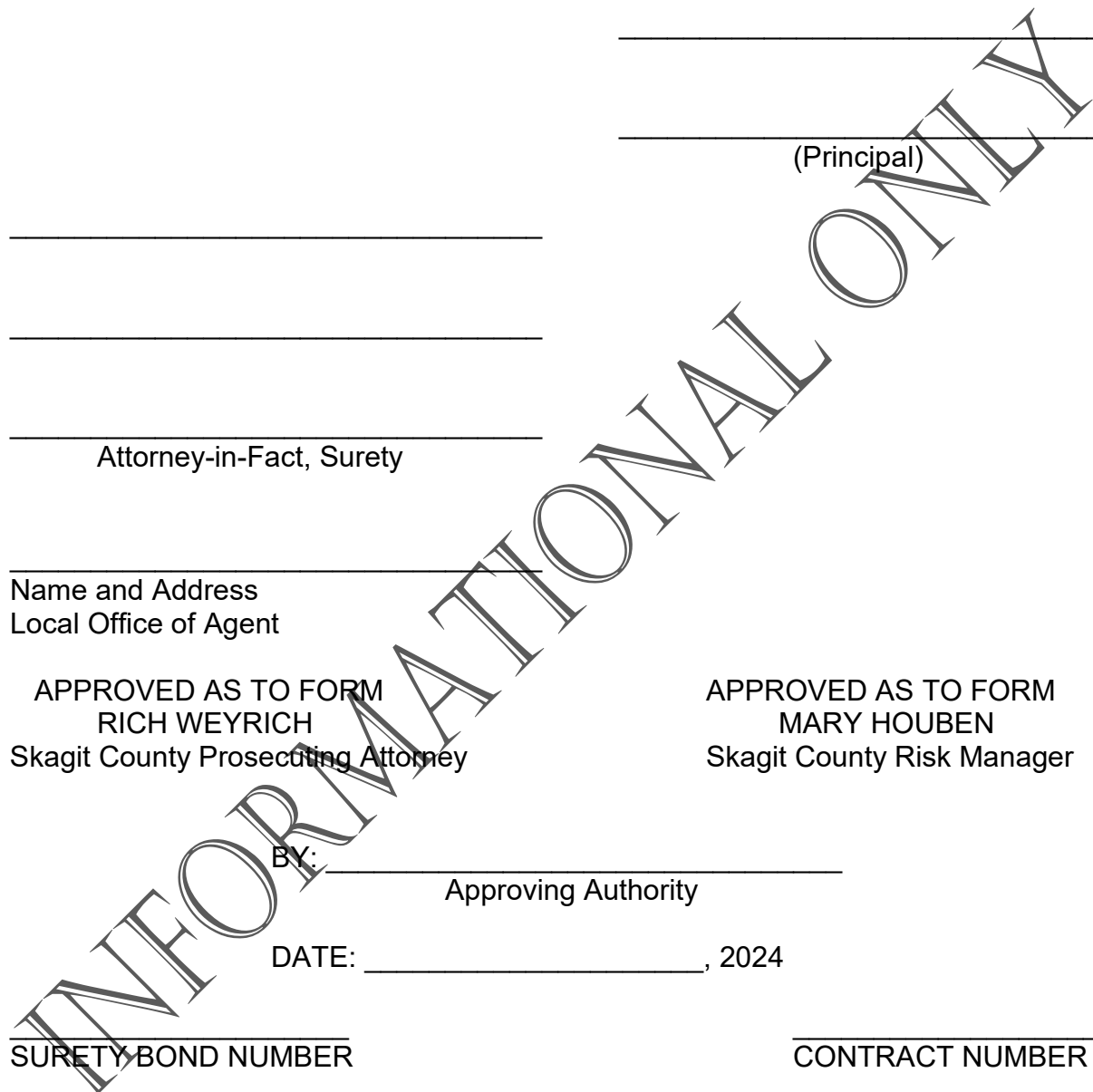
APPROVED AS TO FORM
MARY HOUBEN
Skagit County Risk Manager

BY: _____
Approving Authority

DATE: _____, 2024

SURETY BOND NUMBER

CONTRACT NUMBER



APPENDIX C

Proposal Forms - Informational Only

Proposal for Bidding Purposes

**PURCHASE & ASSEMBLY OF (QTY 3) MARINE DIESEL
ENGINE PACKAGES FOR THE VEHILCE AND PASSENGER
FERRY M/V GUEMES**

Project #FE8-60

Bid Opening: October 28, 2024

SKAGIT COUNTY PUBLIC WORKS



Skagit County
Public Works Department
1800 Continental Place
Mount Vernon, WA 98273-5625

PROPOSAL

**PURCHASE AND ASSEMBLY OF (QTY 3) MARINE DIESEL ENGINE
PACKAGES FOR THE VEHICLE AND PASSENGER FERRY M/V GUEMES
PROJECT #FE8-60**

Skagit County, Washington

Bid Opening: October 28, 2024, 12:00 p.m.

All bid envelopes must be clearly marked on the outside, **“Sealed Bid, 2024 Purchase and Assembly of (QTY 3) Marine Diesel Engine Packages for the Vehicle and Passenger Ferry M/V Guemes.”**

Sealed Bids shall be received at the following location before the specified time:

Bids may be hand deliver to: Skagit County Commissioners, Reception Desk,
1800 Continental Place, Suite 100,
Mount Vernon, WA 98273

Mail to: Skagit County Commissioners
1800 Continental Place, Suite 100
Mount Vernon, WA 98273-5625

The bid opening date for this project will be Monday, October 28, 2024. The bids will be publicly opened and read after 12:00 p.m. on this date. Attendance at meetings will be in-person. You may also attend meetings remotely through your telephone or from your computer, tablet or smartphone with this link: <https://bit.ly/SkagitBoCCMtg> or calling: 1 (253) 215-8782, Meeting ID: 871 8000 1980 Passcode: 143573.

**FAILURE TO SIGN OR COMPLETE ALL INFORMATION ON THE FORMS PROVIDED CAN
RESULT IN REJECTION OF THE PROPOSAL AS
NON-RESPONSIVE.**

ENTIRE BID PROPOSAL TO BE RETURNED AS YOUR BID PACKAGE

PROPOSAL

BOARD OF SKAGIT COUNTY COMMISSIONERS MOUNT VERNON, WASHINGTON 98273

Attention:

This certifies that the undersigned has examined the specifications for the:

PURCHASE & ASSEMBLY OF (QTY 3) MARINE DIESEL ENGINE PACKAGES FOR THE VEHICLE & PASSENGER FERRY M/V GUEMES PROJECT #FE8-60

And that the plans, specifications, and contract governing the work embraced in this work, and the method by which payment will be made for said work, is understood. The undersigned hereby proposes to undertake and complete the work embraced in this improvement, or as much thereof as can be completed with the money available in accordance with the said plans, specifications, and contract, and the following schedule of rates and prices:

Note: This work is exempt from Washington State Sales Tax per RCW 82.08.0285.

(Note: Unit prices for all items, all extensions, and total amount of bid shall be shown. All entries must be typed or entered in ink.)

PURCHASE AND ASSEMBLY OF (QTY 3) MARINE DIESEL ENGINE PACKAGES FOR THE VEHICLE AND PASSENGER FERRY M/V GUEMES

Item No.	Description	Spec	QTY	Unit of Measure	Unit Price	Total Price
1	FABRICATE ENGINE SKID	01.0	3.00	LS	\$ _____ . ____	\$ _____ . ____
2	PRIME AND COAT ENGINE SKID	02.0	3.00	LS	\$ _____ . ____	\$ _____ . ____
3	INSTALL REBUILT ZF REDUCTION GEAR	03.0	3.00	LS	\$ _____ . ____	\$ _____ . ____
4	MOUNT & ALIGN ENGINE/GEAR ASSEMBLY	04.0	3.00	LS	\$ _____ . ____	\$ _____ . ____
5	EQUIPMENT OPTIONS	05.0	3.00	LS	\$ _____ . ____	\$ _____ . ____
CONTINGENCY (15%)						\$ _____ . ____
TOTAL BID						\$ _____ . ____

Performance Period

The performance period for the marine diesel engine purchase and assembly packages shall be 180 calendar days, and work can start as early as December 17, 2024. Time starts the day Skagit County issues the Contractor a Notice to Proceed.

By signing the bid proposal, Contractor agrees that engines will be in stock no later than February 1, 2025. If engines are in stock at the time of bid submittal, Contractor shall confirm on the bid proposal. If not in stock, Contractor shall provide a guaranteed stock date (the date engines will be in the contractor's stock room in Washington State). Further, upon submittal of the proposal, Contractor guarantees engines will be available for Skagit County on the stock date. Engines shall be stored at the Contractor's facility until such time assembly occurs.

Stock date: _____

The work shall commence in phases in accordance with the milestones indicated on the bid proposal. As early as December 17, 2025, or as mutually agreed upon, Skagit County will provide a Notice to Proceed and final fabrication plans. Once both are received by the Contractor, fabrication of the engine skids can start.

Once Skagit County's dry dock dates are known they will be provided to the Contractor. The vessel must be pulled from service for the dry dock no later than March 30, 2025. Prior to the dry dock, Skagit County will provide the Contractor with one (1) spare rebuilt ZF transmission. The estimated date of delivery of the first rebuilt transmission to the Contractor is February 1, 2025.

The remaining ZF gears are currently on the vessel and will be pulled from service, rebuilt, and sent to the Contractor once the vessel arrives at the shipyard. This date will be provided to the Contractor once it is known (Skagit County will know dry dock dates the week of November 12). The vessel will be in dry dock approximately 6 weeks. Therefore, the Contractor will have roughly 14 days to complete final assembly of the second and third packages. The Contractor should plan to reserve space in the Contractor's workshop for this preliminary schedule.

The exact sequence of work shall be mutually agreed upon by the Contractor and Skagit County prior to the issuance of a Notice to Proceed.

The Contractor shall deliver the marine diesel engine packages to the vessel's selected shipyard facility during its upcoming shipyard period (estimated delivery date is April 15 – March 15).

PROPOSAL – Signature Page

The bidder is hereby advised that by signature of this proposal he/she is deemed to have acknowledged all requirements and signed all certificates contained herein.

The undersigned hereby agrees to pay labor not less than the prevailing rates of wages in accordance with the requirements of the special provisions for this project.

A proposal guaranty in an amount of five percent (5%) of the total bid based upon the approximate estimate of quantities at the above prices and in the form as indicated below is attached hereto:

- CASHIER’S CHECK In the amount of \$ _____ Dollars
- CERTIFIED CHECK In the amount of \$ _____ Dollars
(Payable to Skagit County)
- PROPOSAL BOND In the amount five percent (5%) of the total bid.

Receipt is hereby acknowledged of Addendum(s) No. (s) _____, _____, & _____

Signature of Authorized Official(s):

Proposal Must Be Signed →

PRINT NAME

Firm Name: _____

Address: _____

Telephone No.: _____

State of Washington Contractor’s License No. _____

UBI No. _____

Employment Security Department No. _____

Project Contact - Name & Phone # _____

Note:

(1) This proposal form is not transferable and any alteration of the firm’s name entered hereon without prior permission from the Skagit County will be cause for considering the proposal irregular and subsequent rejection of the bid.

BID PROPOSAL MUST BE SIGNED

**FAILURE TO SIGN OR COMPLETE ALL INFORMATION CAN RESULT
IN REJECTION OF THE PROPOSAL AS NON-RESPONSIVE.**

**SUBMIT THE
ENCLOSED PROPOSAL
BOND FORM WITH
YOUR PROPOSAL**

**USE OF OTHER FORMS
MAY SUBJECT YOUR
BID TO REJECTION**

PROPOSAL BOND

KNOW ALL MEN BY THESE PRESENTS, That we, _____ of _____ as principal, and the _____ a

corporation duly organized under the laws of the State of _____, and authorized to do business in the State of Washington, as surety, are held and firmly bound unto Skagit County in the full and penal sum of five percent (5%) of the total amount of the bid proposal of said principal for the work hereinafter described for the payment of which, well and truly to be made, we bind our heirs, executors, administrators and assigns, and successors and assigns, firmly by these presents.

The condition of this bond is such, that whereas the principal herein is herewith submitting his or its sealed proposal for the following, to wit:

PURCHASE & ASSEMBLY OF (QTY 3) MARINE DIESEL ENGINE PACKAGES FOR THE VEHICLE & PASSENGER FERRY M/V GUEMES PROJECT #FE8-60

said bid and proposal, by reference thereto, being made a part hereof.

NOW THEREFORE, If the said proposal bid by said principal be accepted, and the contract be awarded to said principal, and if said principal shall duly make and enter into and execute said contract and shall furnish bond as required by Skagit County within a period of twenty (20) days from and after said award, exclusive of the day of such award, then this obligation shall be null and void, otherwise it shall remain and be in full force and effect.

IN TESTIMONY WHEREOF, The principal and surety have caused these presents to be signed and sealed this _____ day of _____, 2024.

(Principal)

(Attorney-in-fact)

(Surety)

Failure to return this Declaration as part of the bid proposal package will make the bid nonresponsive and ineligible for award.

NON-COLLUSION DECLARATION

I, by signing the proposal, hereby declare, under penalty of perjury under the laws of the United States that the following statements are true and correct:

1. That the undersigned person(s), firm, association or corporation has (have) not, either directly or indirectly, entered into any agreement, participated in any collusion, or otherwise taken any action in restraint of free competitive bidding in connection with the project for which this proposal is submitted.
2. **That by signing the signature page of this proposal, I am deemed to have signed and to have agreed to the provisions of this declaration.**

NOTICE TO ALL BIDDERS

To report rigging activities call:

1-800-424-9071

The U.S. Department of Transportation (USDOT) operates the above toll-free "hotline" Monday through Friday, 8:00 a.m. to 5:00 p.m., eastern time. Anyone with knowledge of possible bid rigging, bidder collusion, or other fraudulent activities should use the "hotline" to report such activities.

The "hotline" is part of USDOT's continuing effort to identify and investigate highway construction contract fraud and abuse and is operated under the direction of the USDOT Inspector General. All information will be treated confidentially and caller anonymity will be respected.



Certification of Compliance with Wage Payment Statutes

The bidder hereby certifies that, within the three-year period immediately preceding the bid solicitation date (**October 10, 2024**), the bidder is not a “willful” violator, as defined in RCW 49.48.082, of any provision of chapters 49.46, 49.48, or 49.52 RCW, as determined by a final and binding citation and notice of assessment issued by the Department of Labor and Industries or through a civil judgment entered by a court of limited or general jurisdiction.

I certify under penalty of perjury under the laws of the State of Washington that the foregoing is true and correct.

Bidder’s Business Name

Signature of Authorized Official*

Printed Name

Title

Date

City

State

Check One:

Sole Proprietorship Partnership Joint Venture Corporation

State of Incorporation, or if not a corporation, State where business entity was formed:

If a co-partnership, give firm name under which business is transacted:

** If a corporation, proposal must be executed in the corporate name by the president or vice-president (or any other corporate officer accompanied by evidence of authority to sign). If a co-partnership, proposal must be executed by a partner.*

APPENDIX D

Insurance Information

INSURANCE REQUIREMENTS

Contractor shall not start work under this contract until Contractor has furnished proof of insurance as required hereunder and such insurance has been approved by Skagit County; nor shall Contractor allow any subcontractor to commence work on its subcontract until the same insurance requirements have been complied with by such subcontractor. Approval of insurance by Skagit County shall not relieve or decrease the liability of Contractor for any damages arising from Contractor's performance of the work.

Contractor shall procure and maintain during the life of this contract, Commercial General Liability, and Automobile Liability Insurance, as detailed herein, to protect Skagit County and Contractor from and against all claims, damages, losses and expenses arising out of or resulting from the performance of work detailed herein, with insurance companies or through sources approved by the State Insurance Commissioner pursuant to RCW Chapter 48. Coverage provided shall protect against claims for personal injuries, including accidental death, as well as claims for property damages which may arise from any act or omission of the Contractor or any subcontractor, or by anyone directly or indirectly involved or employed by either of them.

Contractor insurance policies shall include Skagit County as "Additional Insured" on a primary basis and others if required by contract documents. Language must be included and state:

Skagit County, its elected officials, officers, employees, and volunteers are named as additional insured.

All insurance policies shall be endorsed to provide that no policy shall be cancelled, changed or reduced in coverage, until after thirty (30) days prior written notice has been delivered to Skagit County through certified mail.

A Certificate of Insurance including the Additional Named Insured Endorsement shall be filed with Skagit County after award, but prior to execution of the contract, for a primary policy of commercial general liability insurance and automobile liability insurance meeting the requirements herein.

The Certificate of Insurance (ACCORD Form 25-S) cancellation clause shall be revised to read as indicated below.

Failure of the Contractor to fully comply with the requirements set forth herein regarding insurance shall be considered a material breach of contract and shall be cause of immediate termination of the contract and of any and all obligations regarding the same.

Approval of the insurance, by Skagit County, shall not relieve or decrease the liability of the Contractor for any damages arising from Contractor's performance of the work.

It is the Contractor's obligation to enforce the requirements of this section in respect to any subcontractor employed for this project:

Commercial General Liability and Property Liability Insurance shall be written with limits of liability of no less than \$1,000,000 combined single limits, per occurrence and \$2,000,000 in aggregate, and shall include:

- Premises and Operations;
- Owners and Contractors Protective;
- Products Liability, including completed Operations Coverage;
- Contractual Liability;
- Broad Form Property Damage;
- Commercial Form (to include Extended Bodily Injury);
- Employees as Additional Insured;
- Explosion, Collapse and Underground Hazard;
- Independent Contractors;
- Personal Injury;
- Stop Gap;
- Cross Liability Clause.

Automobile Bodily Injury shall be written with limits of liability as required by the Supplementary General Conditions, but shall in no case be for limits less than \$1,000,000 Combined Single Limit. Coverage shall include:

All owned automobiles;
Non-Owned automobiles;
Hired Automobiles;
Any automobiles.

USL&H Insurance is a requirement of this project; (USL&H is a federal act sometimes referred to as "Longshore Harbor Worker's Compensation Act" or Jones Act). The successful bidder will be required to obtain USL&H insurance for this project. This insurance falls under jurisdiction of the U.S. Department of Labor.

APPENDIX E
Mandatory Bidder Checklist -
Informational Only

MANDATORY BIDDER RESPONSIBILITY CRITERIA

It is the intent of Skagit County to award a contract to the lowest responsive and responsible bidder. The bidder must meet the following criteria to be considered a responsible bidder. The bidder will be required to submit documentation demonstrating compliance with these criteria to the satisfaction of Skagit County either at time of bid submittal or within 24 hours of the bid submittal deadline as noted below. **If a bidder does not provide the appropriate documentation, as required by Skagit County, the bidder will not be considered a responsible bidder, and the bid will be rejected.**

1. **At time of bid submittal**, the bidder must be registered/licensed contractor in compliance with Chapter 18.27 RCW, and must provide this number with bid.

If applicable, bidder may also be required to submit with bid: a) an electrical contractor license, if required by Chapter 19.28 RCW; and/or b) an elevator contractor license, if required by Chapter 70.87 RCW.

2. **At time of bid submittal**, the bidder must have completed the mandatory Prevailing Wage Training offered by the Department of Labor and Industries (L&I), or meet the L&I exemption requirements.

3. The bidder must have a current Washington State Unified Business Identifier (UBI) number and provide the number to Skagit County **at time of bid submittal**. This will be verified with the Washington State Department of Revenue.

4. The bidder must provide Washington State Industrial Insurance Coverage (a/k/a workers' compensation) in accordance with Washington State Department of Labor & Industries, **within 24 hours of the bid submittal deadline**, if applicable.

5. The bidder must provide their Employment Security Department number to Skagit County **at time of bid submittal**, as required in Title 50 RCW, if applicable. Bidder must provide document reflecting the appropriate number from the Employment Security Department to Skagit County **within 24 hours of the bid submittal deadline**, if applicable.

6. The bidder must have a Washington State Excise Tax Registration Number as required in Title 82 RCW, if applicable, **at time of bid submittal**. This will be verified with the Washington State Department of Revenue.

7. The bidder must not be currently disqualified from bidding on any public works contract under RCW 39.06.010 or 39.12.065(3). This will be verified with the Washington State Department of Labor & Industries.

8. FEDERAL DEBARMENT: The Bidder shall not currently be debarred or suspended by the Federal government. The Bidder shall not be listed as a current debarred or suspended bidder on the U.S. General Services Administration's "System for Award Management System" website, and will be verified through this website:

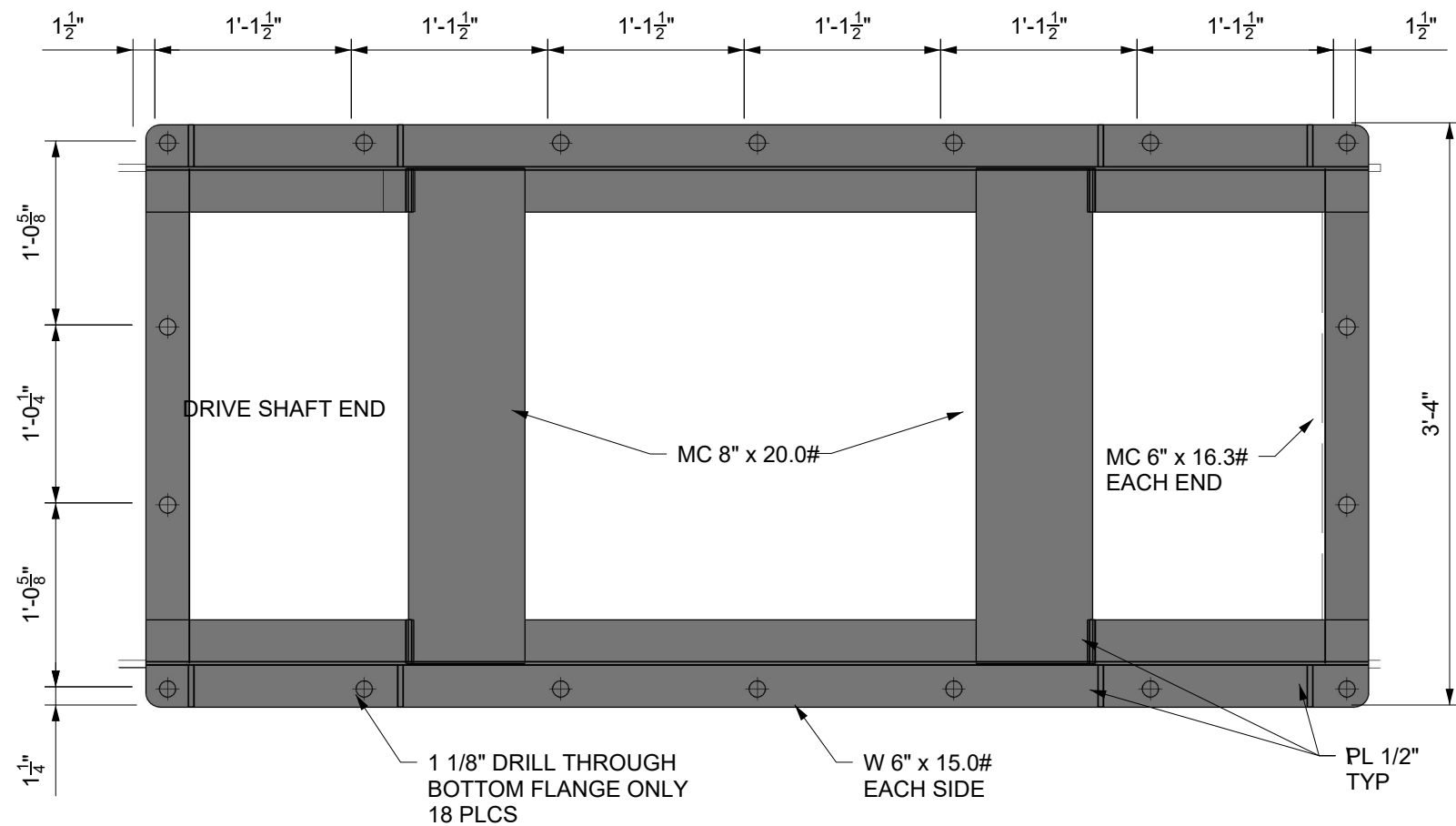
<https://www.sam.gov/SAM/>

TO BE VERIFIED BY SKAGIT COUNTY Mandatory Bidder Responsibility Checklist

The following checklist will be used by Skagit County Public Works in documenting that a Bidder meets the mandatory bidder responsibility criteria. A copy of documentation from the appropriate websites will be included with this checklist and placed in the contract file. This checklist is provided to Bidder as a reference tool to determine and verify mandatory requirements.

General Information	
Project Name:	Project Number:
Bidders Business Name:	Bid Submittal Deadline:
Contractor Registration - Lnl Verify a Contractor	
License Number:	Status: Active? Yes <input type="checkbox"/> No <input type="checkbox"/>
Effective Date (must be effective on or before Bid Submittal Deadline):	Expiration Date:
Electrical: If required by Chapter 19.028 RCW, does the Subcontractor have an Electrical Contractor's License? Yes <input type="checkbox"/> No <input type="checkbox"/> N/A <input type="checkbox"/>	Elevator: If required by Chapter 70.87 RCW, does the Subcontractor have an Elevator Contractor's License? Yes <input type="checkbox"/> No <input type="checkbox"/> N/A <input type="checkbox"/>
L&I Prevailing Wage Training Completed -	
Does the Contractor need to complete L&I Prevailing Wage training? Yes <input type="checkbox"/> No <input type="checkbox"/>	
Current UBI Number -	
UBI Number:	Account Status: Open <input type="checkbox"/> Closed <input type="checkbox"/>
Industrial Insurance Coverage -	
Account Number:	Account Status Current? Yes <input type="checkbox"/> No <input type="checkbox"/>
Contractor and Plumber Infraction List - L&I Strike List	
Is Bidder on Infraction List? Yes <input type="checkbox"/> No <input type="checkbox"/>	
Not Disqualified from Bidding - L&I Debarred Contractor List	
Is the Bidder listed on the "Contractors Not Allowed to Bid on Public Works Projects" List? Yes <input type="checkbox"/> No <input type="checkbox"/>	
State Excise Tax Registration Number - DOR Business Lookup	
Tax Registration Number:	Account Status: Open <input type="checkbox"/> Closed <input type="checkbox"/>
Federal Debarment - www.sam.gov/SAM/	
Debarred or Suspendd by the Federal Government? Yes <input type="checkbox"/> No <input type="checkbox"/>	
Employment Security Department (ESD) Number -	
Employment Security Department Number:	
<ul style="list-style-type: none"> • Has Bidder provided account number on the Bid Form? • Has Bidder provided documentation from ESD on Account Number? 	Yes <input type="checkbox"/> No <input type="checkbox"/> Yes <input type="checkbox"/> No <input type="checkbox"/>
Documentation must be received within 24 hrs. of Bid Submittal Deadline.	
Checked by:	
Name & Signature of Skagit County Employee:	Date:
Responsible Bidder	Yes <input type="checkbox"/> No <input type="checkbox"/>

APPENDIX F
PLANS

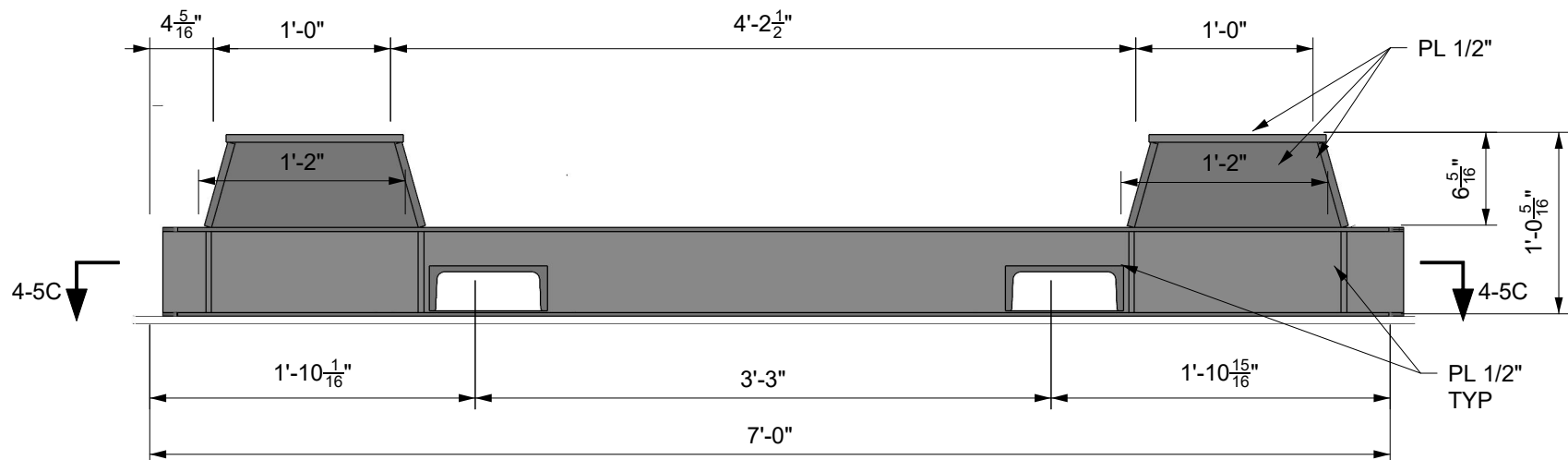


PLAN 4-5C
ENGINE FOUNDATION
SCALE: 1" = 1'-0"

GENERAL NOTES

1. ALL WORKMANSHIP AND WELDING TO BE IN ACCORDANCE WITH ASTM RULES AND SKAGIT COUNTY PROJECT SPECIFICATIONS. STRUCTURAL STEEL FABRICATION TOLERANCE TO BE WITHIN +/- 1/8".
2. SKID TO BE PRIMED AND PAINTED WITH MARINE GRADE COATINGS.
3. DRAWING IS PROVIDED AS A BASIS FOR BIDDING PURPOSES ONLY; UPON FINAL ENGINE SELECTION, CRUCIBLE WILL PROVIDE DRAWING FOR FABRICATION. SEE TECHNICAL SPECIFICATIONS.


PRELIMINARY FOR BIDDING PURPOSES ONLY



ELEVATION 4-5B
ENGINE FOUNDATION
SCALE: 1" = 1'-0"



SECTION 4-2B
ENGINE FOUNDATION
SCALE: 1" = 1'-0"

	Prepared for: SKAGIT COUNTY FERRY "GUEMES" REPOWER			
	Crucible Engineering LLC Seattle, WA crucibleservices.com (206) 383-1393			
PRELIMINARY	ENGINE FOUNDATION & THRUSTER CONNECTION			
	DRAWN: CSM SCALE:	CHECKED: JSH DRAWING NO: 24014-180-101	DATE: 9/19/2024	SHEET REV P1